



QUARTERLY REPORT

SECOND QUARTER 2013

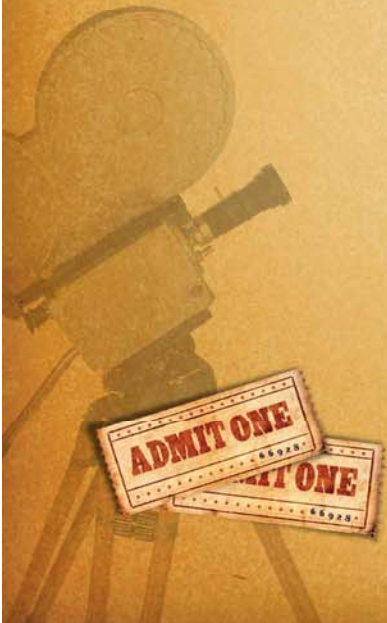
Table of Contents



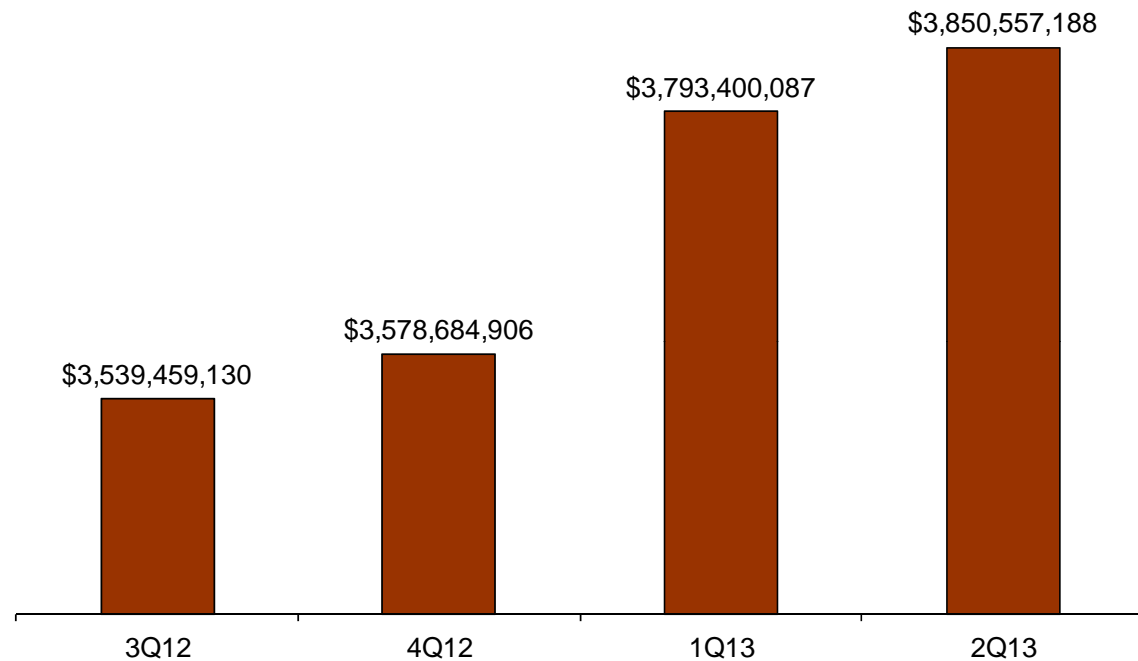
Topic	Section	Pages
Plan Overview	1	3-16
Administrative Overview	2	17-27
Local Office Activity	3	28-35
Appendix	4	36-41



Plan Overview

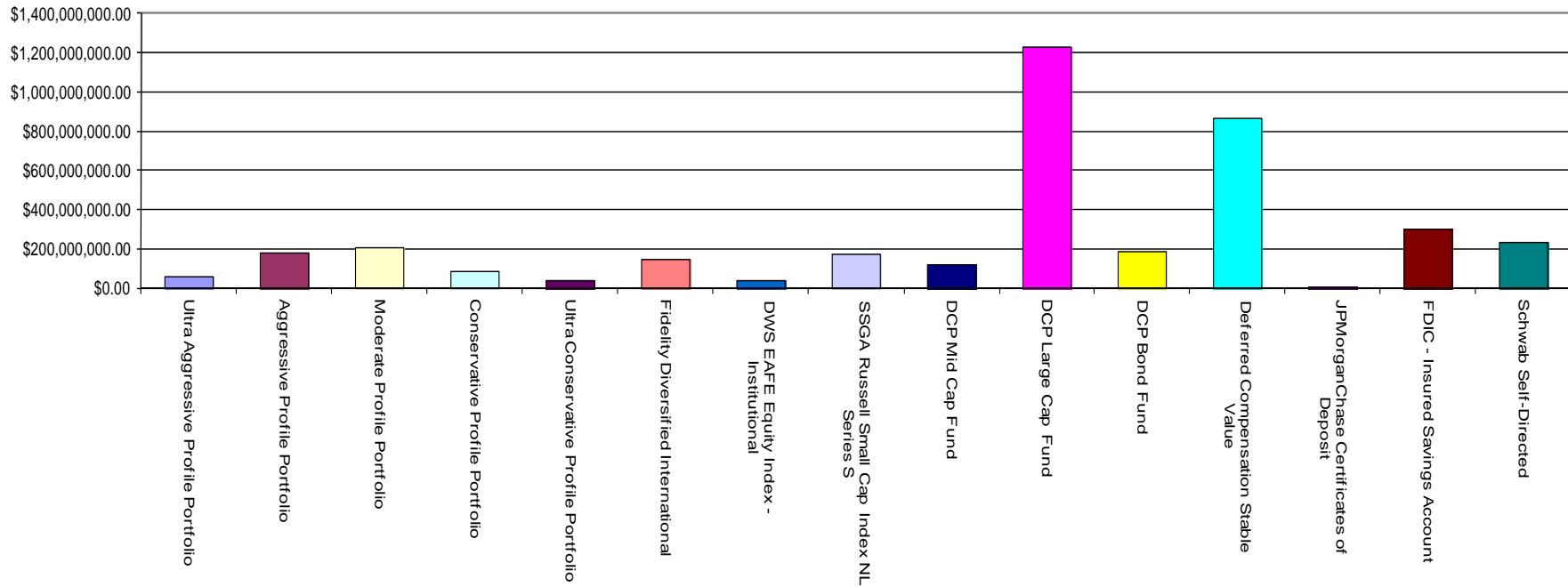


Assets



Net Asset Change	3Q 2012	4Q 2012	1Q 2013	2Q 2013
Beginning Balance	\$3,391,616,360	\$3,539,459,130	\$3,578,684,906	\$3,793,400,087
Deposits	\$70,734,867	\$72,190,565	\$87,647,714	\$81,006,402
Net Transfers	(\$41,600)	(\$143,910)	\$49,610	\$50,400
Fees	(\$635,353)	(\$557,342)	(\$663,880)	(\$674,153)
Distributions	(\$52,789,597)	(\$57,363,798)	(\$68,926,195)	(\$64,335,620)
Change in Value	\$130,489,566	\$21,763,314	\$196,353,452	\$41,066,518
Interest/Dividends	\$84,887	\$3,336,946	\$254,479	\$43,553
Ending Balance	\$3,539,459,130	\$3,578,684,906	\$3,793,400,087	\$3,850,557,188
Outstanding Loans	\$142,477,967	\$150,252,064	\$149,215,032	\$160,901,570
Total Assets Including Loans Outstanding	\$3,681,937,097	\$3,728,936,970	\$3,942,615,119	\$4,011,458,758
Total Assets in Ending Balance As Roth Balances	\$4,360,755	\$5,609,571	\$7,328,598	\$9,034,368

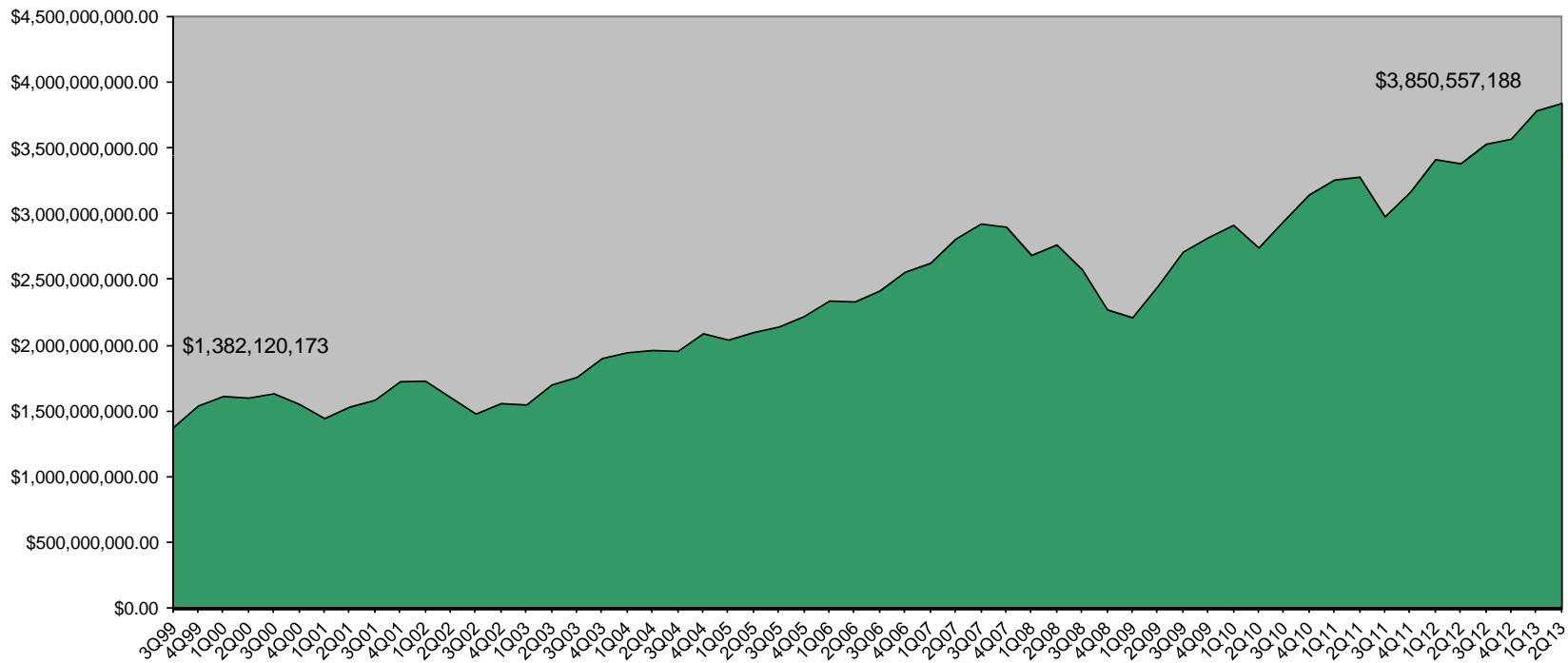
Quarter End Assets



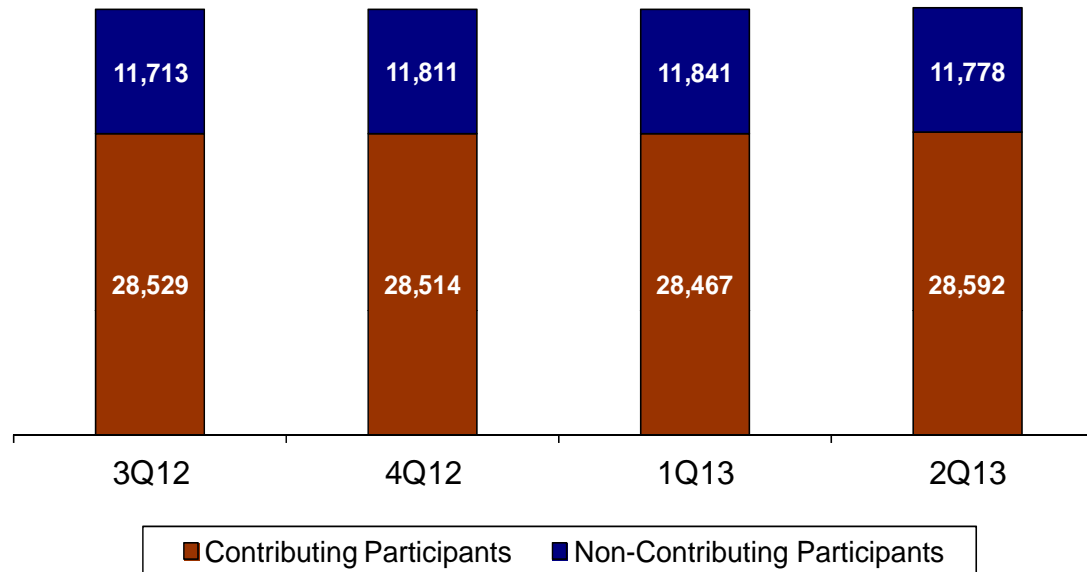
Total Assets = \$ 3,850,557,188

Details on page 37

Historical Assets

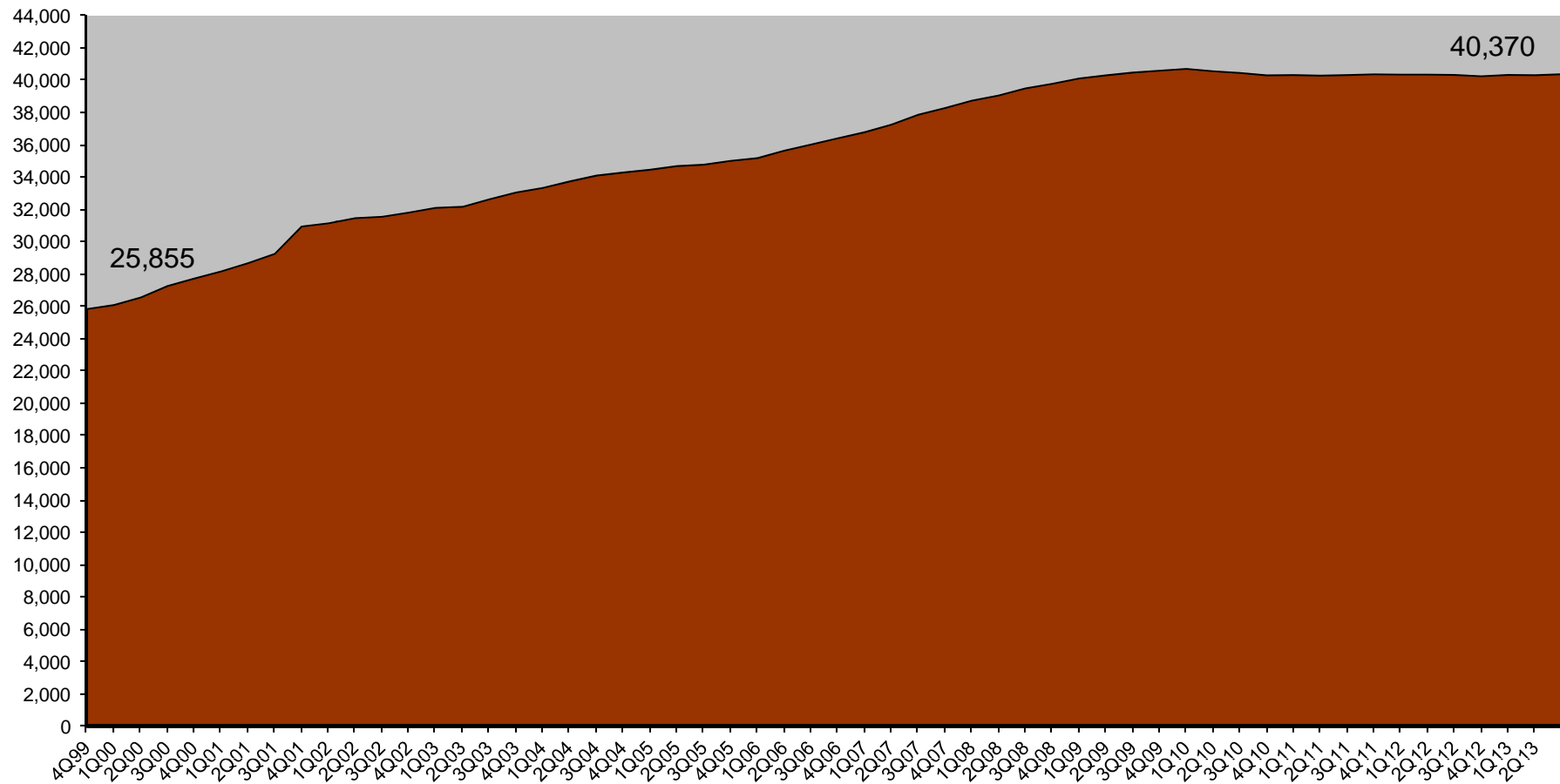


Quarter End Participants

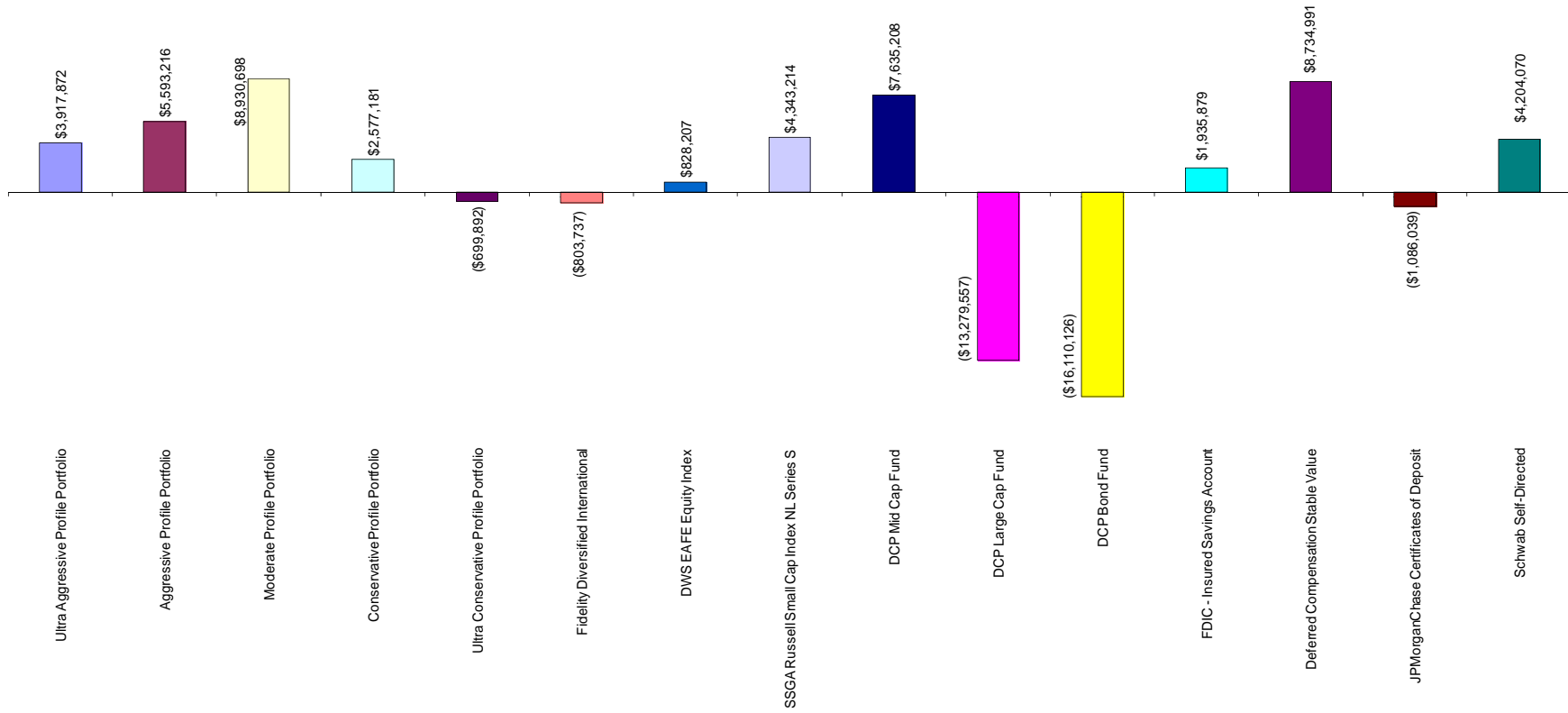


	3Q12	4Q12	1Q13	2Q13
Contributing Participants	28,529	28,514	28,467	28,592
Non-Contributing Participants	11,713	11,811	11,841	11,778
Total Participants	40,242	40,325	40,308	40,370
New Participants Added	160	229	215	288
Average Bi-Weekly Deferral for the quarter	\$320	\$353	\$339	\$402
Median Account Balance	\$39,716	\$40,266	\$42,497	\$42,954
Participants contributing to Roth source	1,150	1,210	1,484	1,718
Average Roth Deferral for the quarter	\$153	\$168	\$155	\$171

Historical Participants

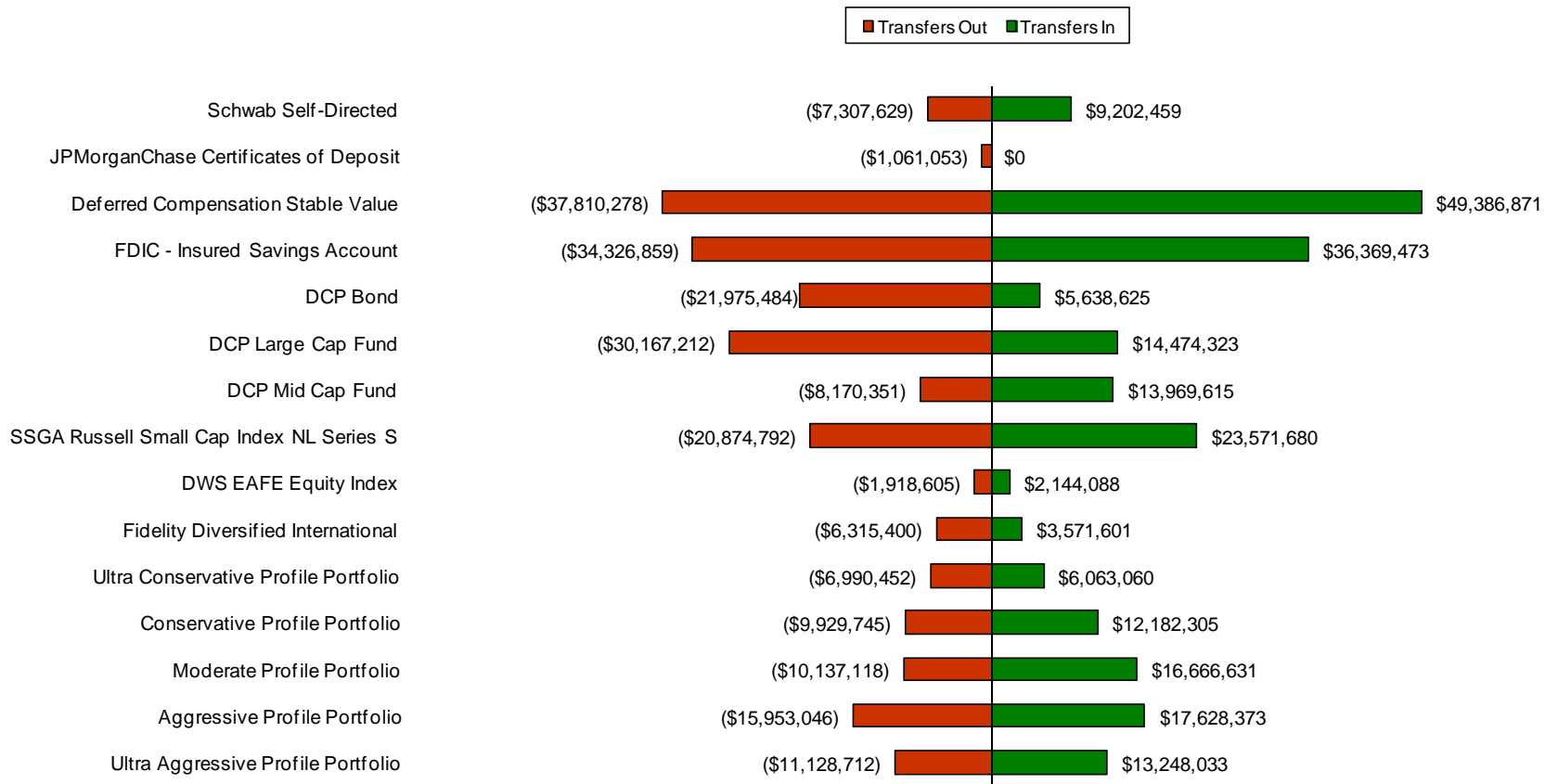


Net Cash Flow

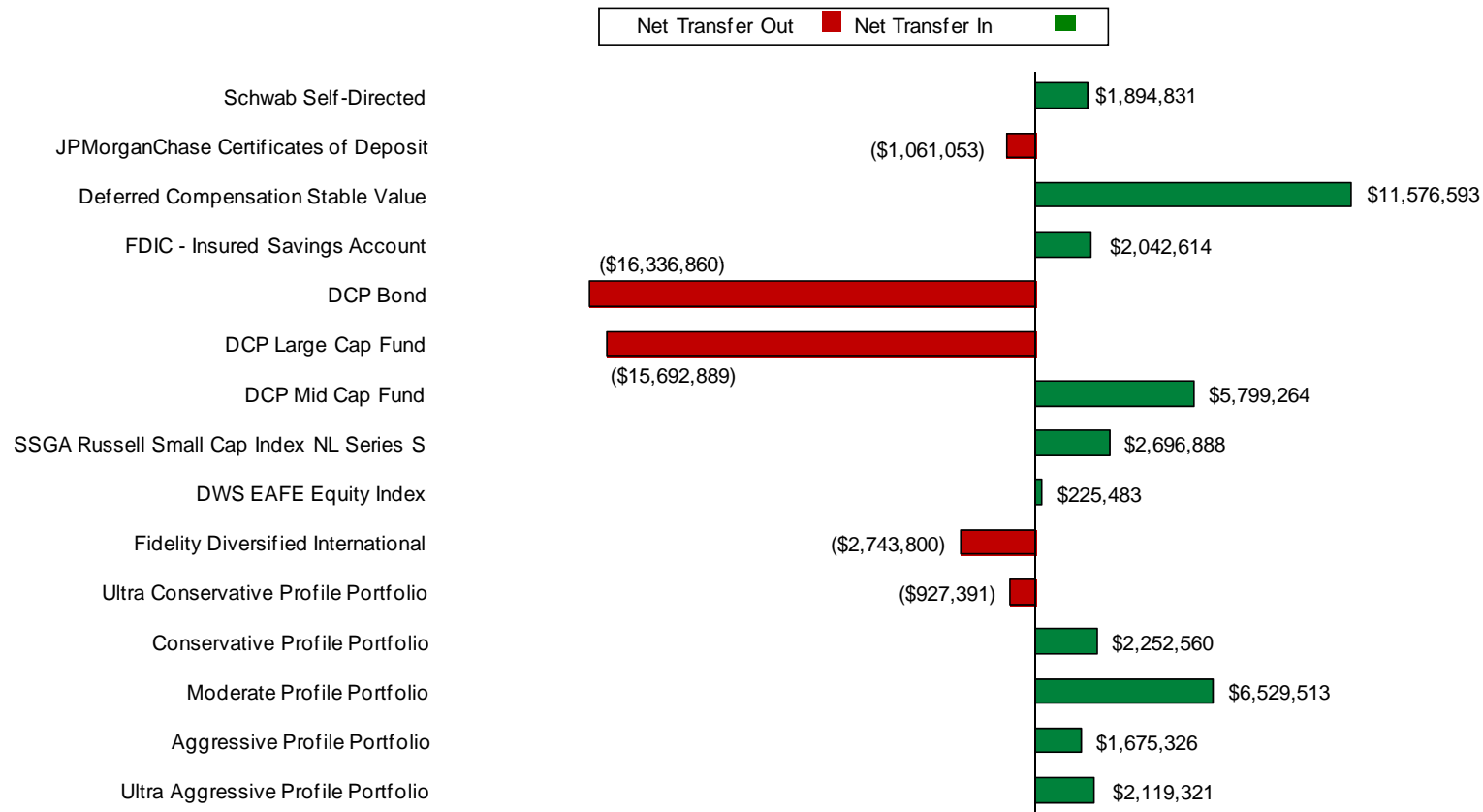


Net Cash Flow Detail can be found on page 39

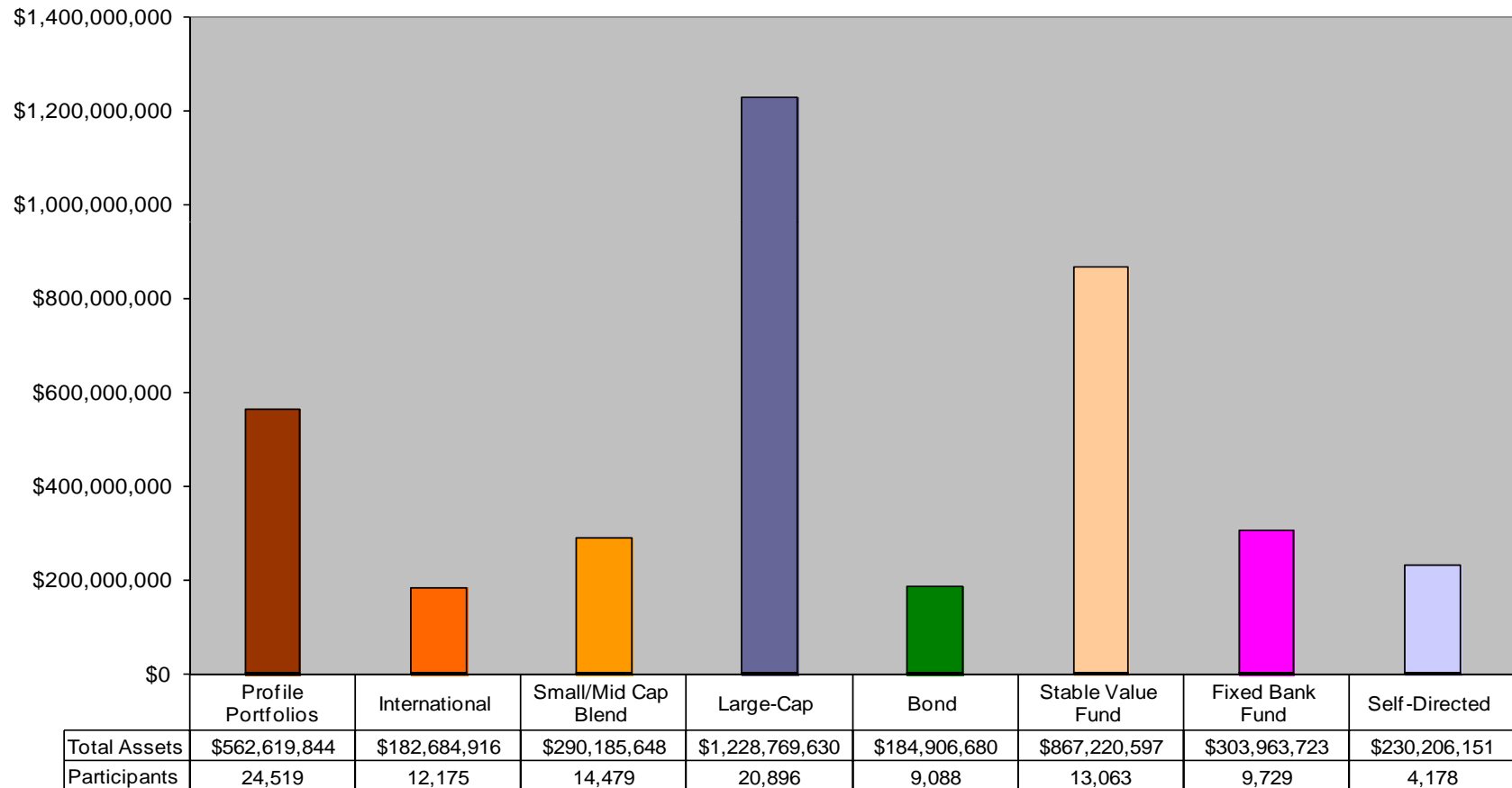
Participant Transfer Activity



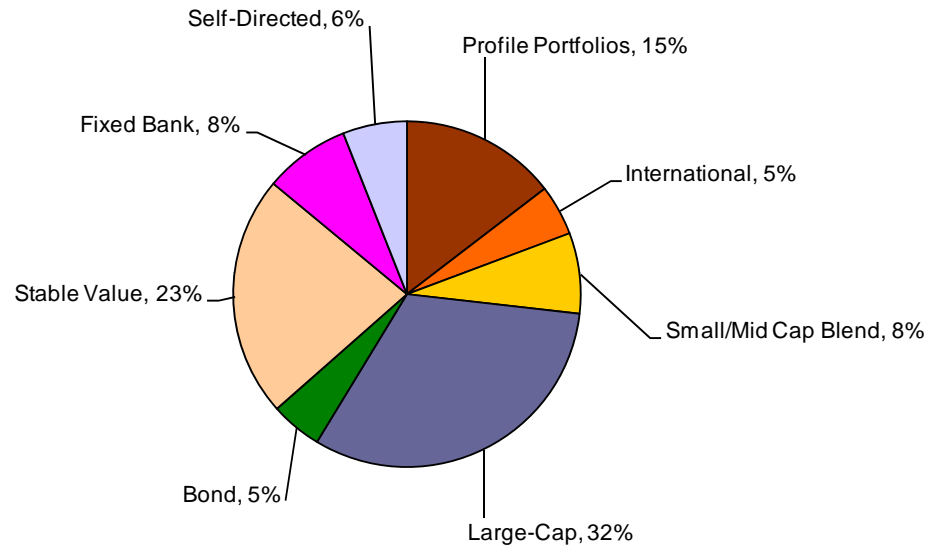
Net Transfer Activity



Asset Allocation by Asset Class

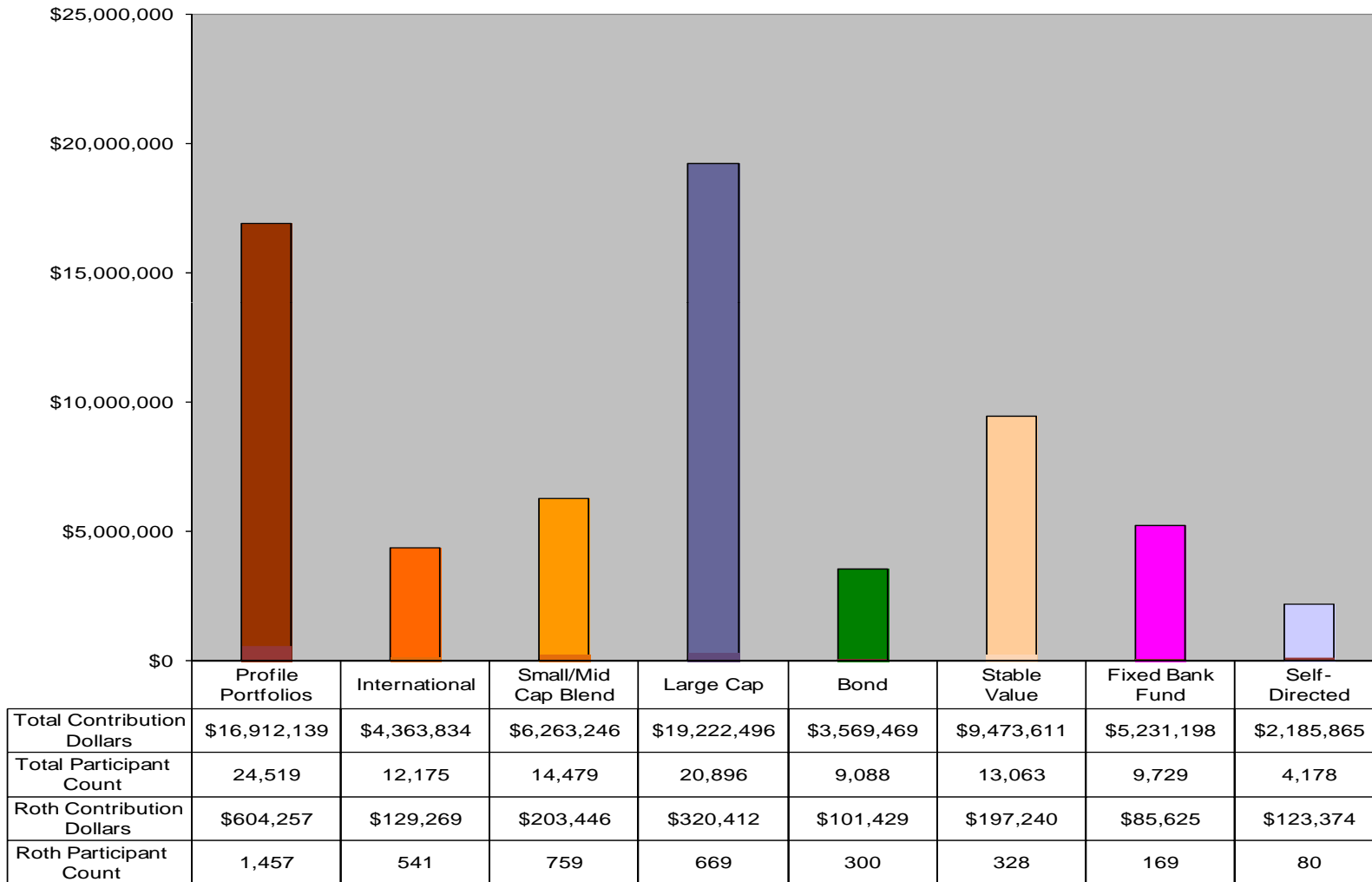


Asset Allocation by Asset Class as Percent of Total

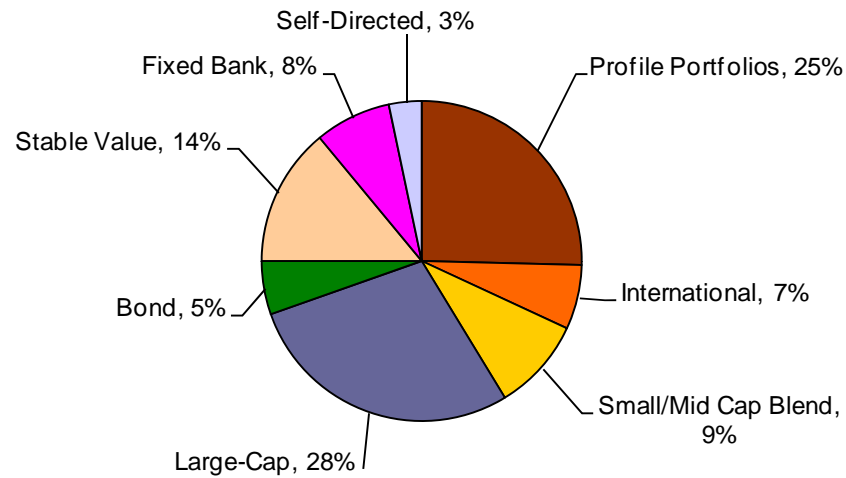


	Profile Portfolios	International	Small/Mid Cap Blend	Large-Cap	Bond	Stable Value	Fixed Bank	Self-Directed
at 09/30/12	12.9%	4.6%	6.3%	32.2%	6.2%	23.2%	8.6%	6.0%
at 12/31/12	13.4%	4.8%	6.3%	31.0%	6.2%	23.6%	8.7%	6.0%
at 03/31/13	14.3%	4.8%	7.1%	31.8%	5.5%	22.5%	8.0%	6.0%
at 06/30/13	14.6%	4.7%	7.5%	31.9%	4.8%	22.5%	8.0%	6.0%

Contribution Allocation by Asset Class

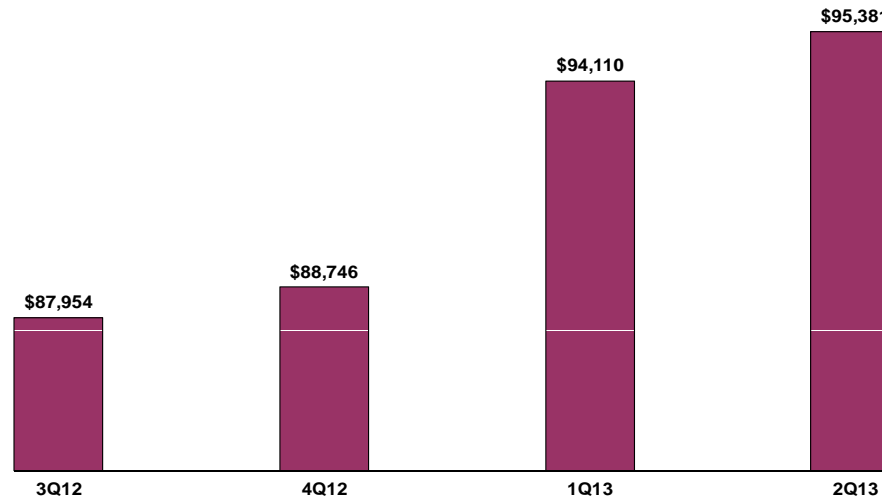


Contribution Allocation by Asset Class by Pct of Total



	Profile Portfolios	International	Small/Mid Cap Blend	Large-Cap	Bond	Stable Value	Fixed Bank	Self-Directed
at 09/30/12	22.9%	6.2%	8.6%	29.8%	6.4%	14.6%	8.2%	3.3%
at 12/31/12	24.1%	6.3%	8.7%	29.4%	6.2%	14.0%	7.9%	3.4%
at 03/31/13	24.3%	6.4%	8.8%	28.6%	5.9%	14.7%	7.8%	3.5%
at 06/30/13	25.4%	6.5%	9.4%	28.3%	5.4%	14.0%	7.7%	3.3%

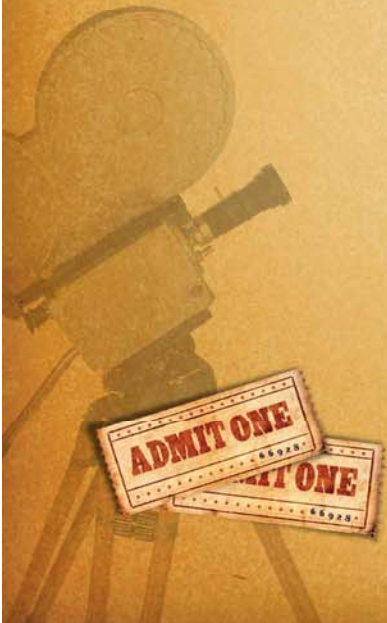
Average Account Balance



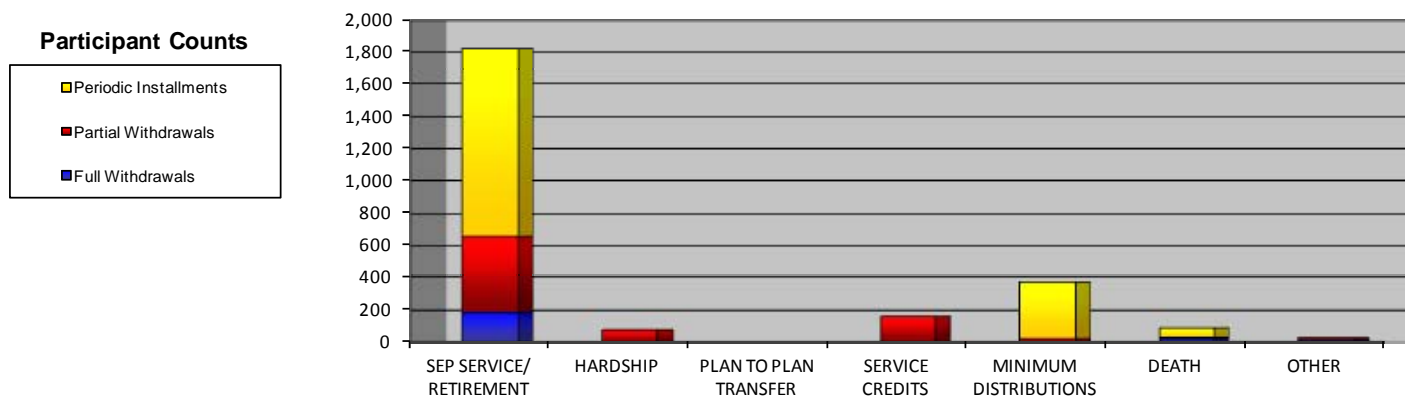
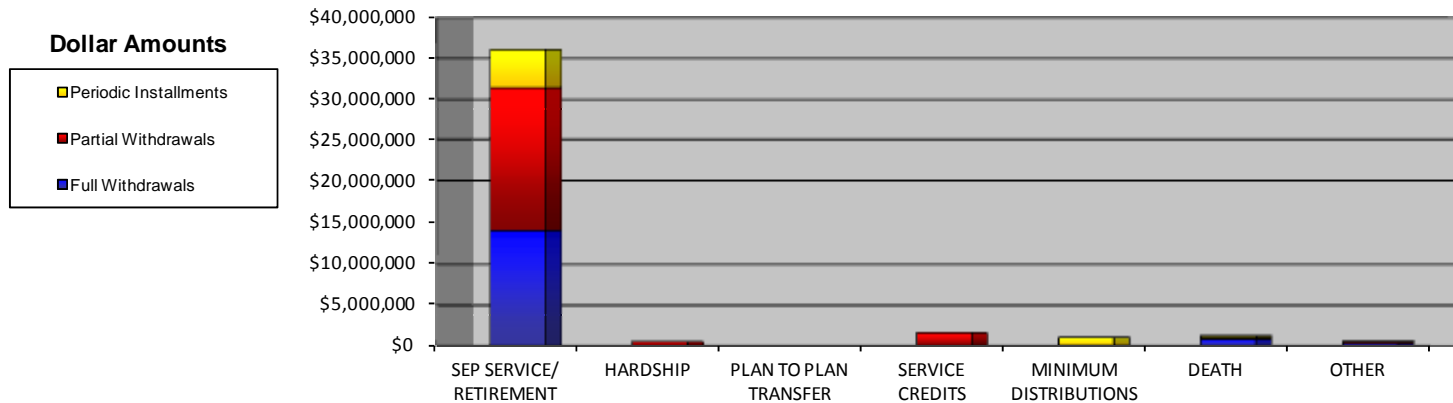
CATEGORY	# Of Ppts	Percent	BALANCE	Percent
Less Than \$25,000	15,143	37.5%	152,620,097	4.0%
\$25,001-\$50,000	6,466	16.0%	234,214,029	6.1%
\$50,001-\$75,000	3,674	9.1%	226,245,931	5.9%
\$75,001-\$100,000	2,649	6.6%	230,406,265	6.0%
\$100,001-\$125,000	2,044	5.1%	228,559,081	5.9%
\$125,001-\$150,000	1,633	4.0%	224,021,964	5.8%
\$150,001-175,000	1,406	3.5%	227,802,328	5.9%
\$175,001-\$200,000	1,184	2.9%	221,749,091	5.8%
\$200,001-\$300,000	3,301	8.2%	808,850,183	21.0%
\$300,001-\$400,000	1,516	3.8%	518,884,091	13.5%
\$400,001-\$500,000	628	1.6%	278,034,406	7.2%
\$500,001-\$600,000	320	0.8%	174,567,671	4.5%
\$600,001-\$700,000	148	0.4%	96,276,232	2.5%
\$700,001-\$800,000	101	0.3%	75,210,402	2.0%
\$800,001-\$900,000	62	0.2%	52,587,885	1.4%
\$900,001-\$1,000,000	46	0.1%	43,602,608	1.1%
over \$1,000,001	49	0.1%	56,924,924	1.5%
Total	40,370	100%	\$3,850,557,188	100%



Administrative Overview



Distributions by Dollar and Ppt



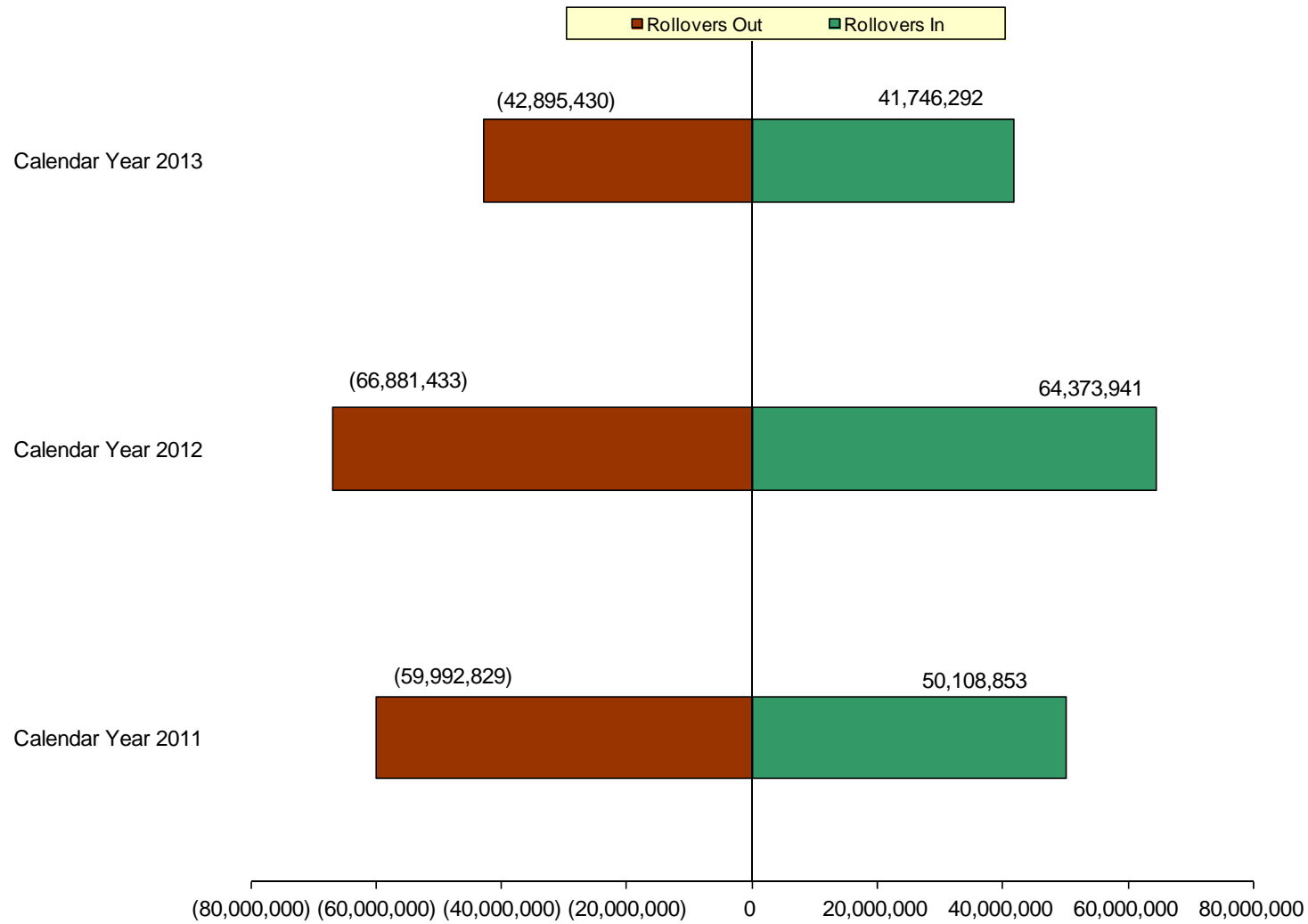
Full details regarding distributions (including loan information) are found on the next page.

Distribution Detail

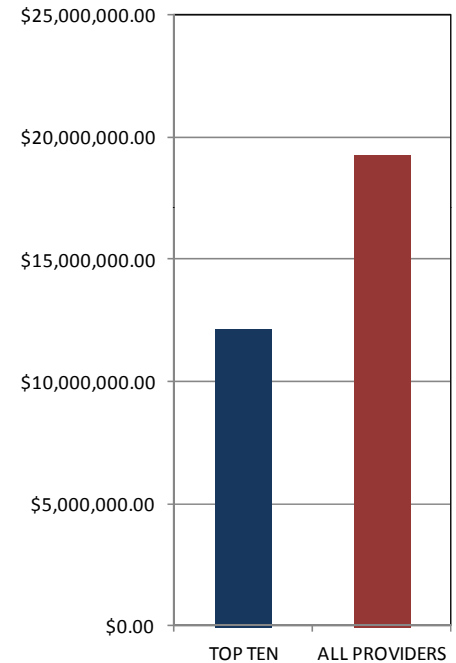
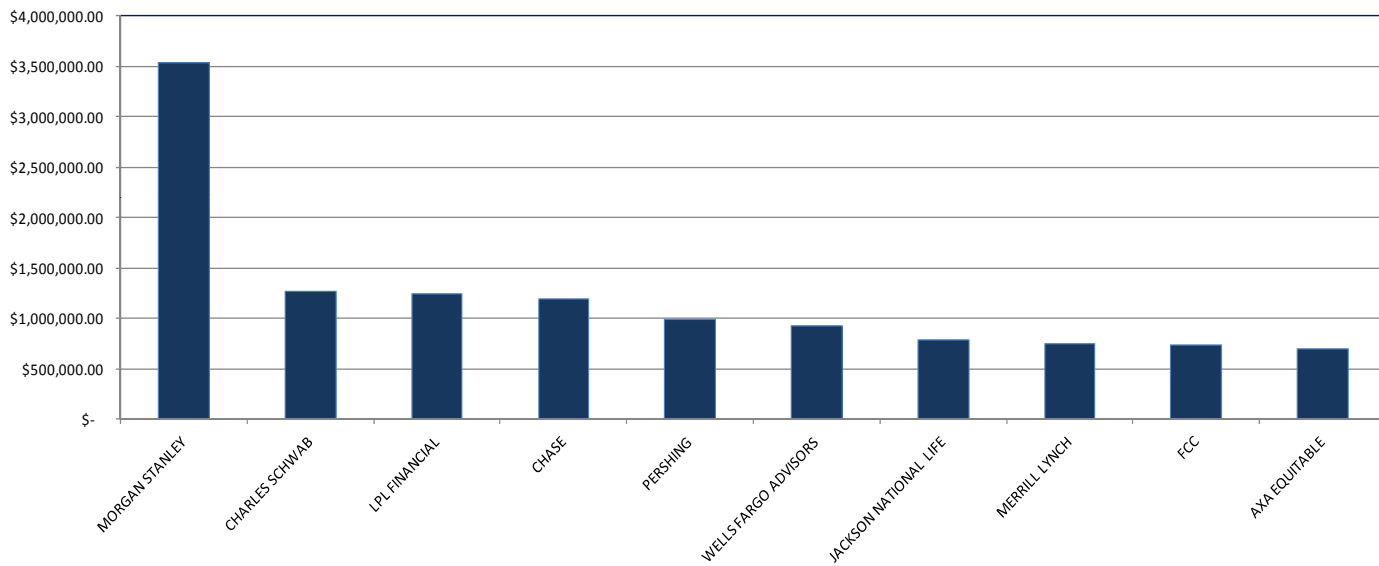


FULL DISTRIBUTIONS	Distribution Amounts	Percent	Participant Count	Percent	Average Withdrawal
TOTALS	\$15,115,760.65	100.0%	220	100.0%	\$68,708.00
CEDO/QDRO	369,980.03	2.4%	11	5.0%	33,634.55
DEATH	787,272.09	5.2%	22	10.0%	35,785.10
DEMINIMUS	0.00	0.0%	0	0.0%	n/a
HARDSHIP	0.00	0.0%	0	0.0%	n/a
PLAN TO PLAN TRANSFER	0.00	0.0%	0	0.0%	n/a
RETIREMENT	10,571,914.52	69.9%	125	56.8%	84,575.32
SEP SERVICE	3,386,594.01	22.4%	62	28.2%	54,622.48
PARTIAL DISTRIBUTIONS					
TOTALS	\$43,407,492.90	100.0%	2,525	100.0%	\$17,191.09
CEDO/QDRO	231,287.27	0.5%	14	0.6%	16,520.52
DEMINIMUS	0.00	0.0%	0	0.0%	n/a
DEATH	203,349.57	0.5%	9	0.4%	22,594.40
HARDSHIP	549,155.75	1.3%	78	3.1%	7,040.46
LOAN	23,374,451.23	53.8%	1,765	69.9%	13,243.32
MINIMUM DISTRIBUTIONS	93,103.15	0.2%	24	1.0%	3,879.30
PLAN TO PLAN TRANSFER	0.00	0.0%	0	0.0%	n/a
RETIREMENT	15,038,592.04	34.6%	414	16.4%	36,325.10
SEP SERVICE	2,363,327.68	5.4%	58	2.3%	40,747.03
EXTERNAL TRANSFERS	3,221.02	0.0%	1	0.0%	3,221.02
SERVICE CREDITS	1,551,005.19	3.6%	162	6.4%	9,574.11
PERIODIC INSTALLMENTS					
TOTALS	\$5,812,366.09	100.0%	1,568	100.0%	\$3,706.87
CEDO/QDRO	4,200.00	0.1%	2	0.1%	2,100.00
DEATH	195,614.24	3.4%	60	3.8%	3,260.24
MINIMUM DISTRIBUTIONS	935,346.32	16.1%	341	21.7%	2,742.95
RETIREMENT	4,677,205.53	80.5%	1,165	74.3%	4,014.77
70 1/2 INSR	0.00	0.0%	0	0.0%	n/a

Rollovers Out & Into the Plan

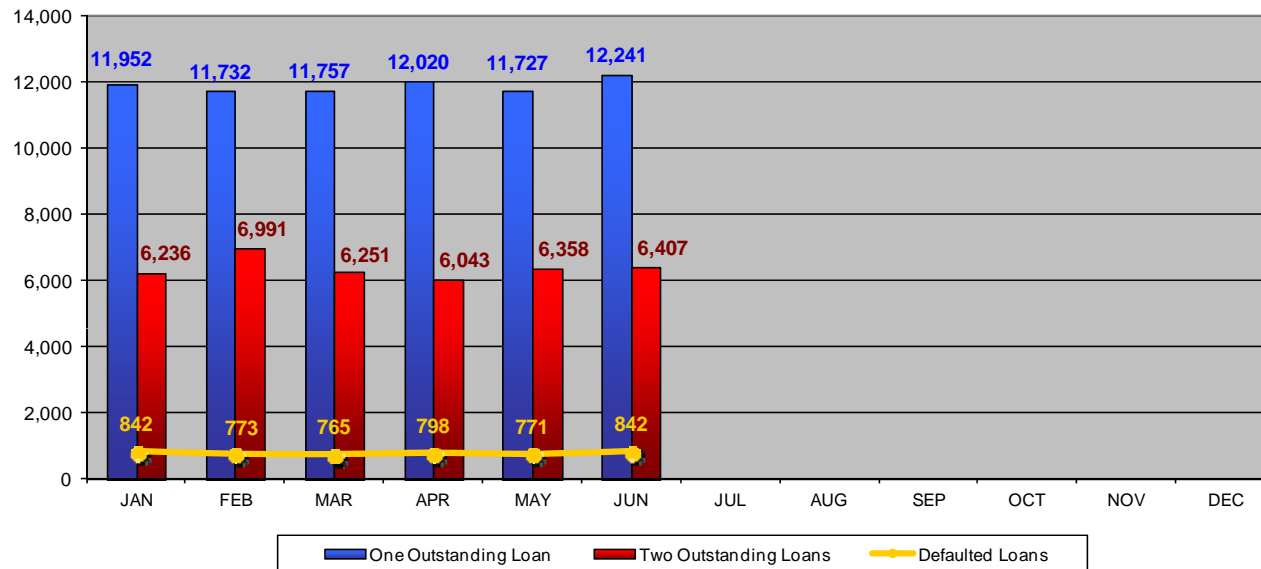


Rollovers to IRA Summary by Top Ten Providers by Dollars



The top 10 providers represent 63% of total assets withdrawn and rolled to an IRA in 2Q 2013.

Loan Overview



Loan Balance Details for Active Loans

Total Balance of Outstanding Loans as of June 30, 2013: \$160,901,570.07
 Average Balance of Outstanding Loans as of June 30, 2013: \$8,261.11
 Total Balance of Defaulted Loans as of June 30, 2013: \$5,329,211.49

Loan Balance Details for Retiree Loans

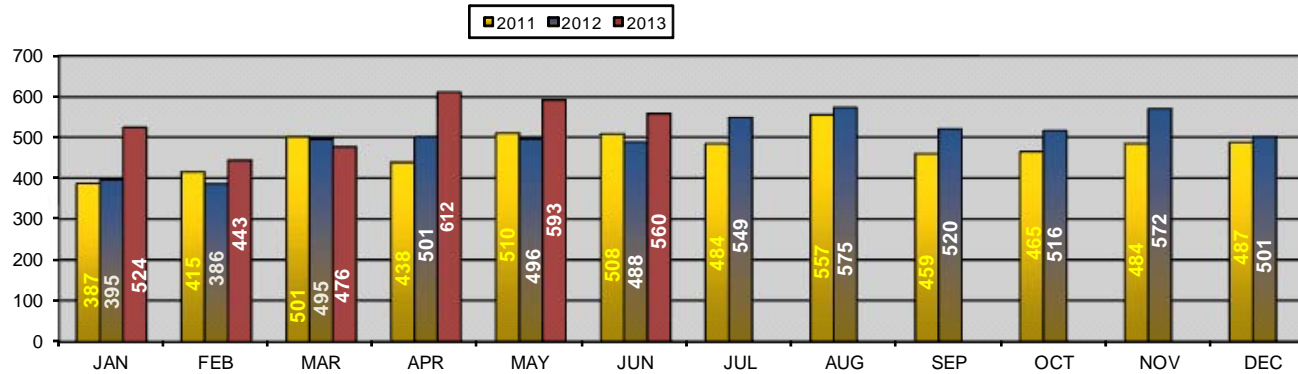
Total number of retiree loans: 172
 New number of retiree loans added during the quarter: 56
 Total number of converted loans: 64
 New number of converted loans added during the quarter: 23

Historical data found on page 40.

Loan Highlights by Year

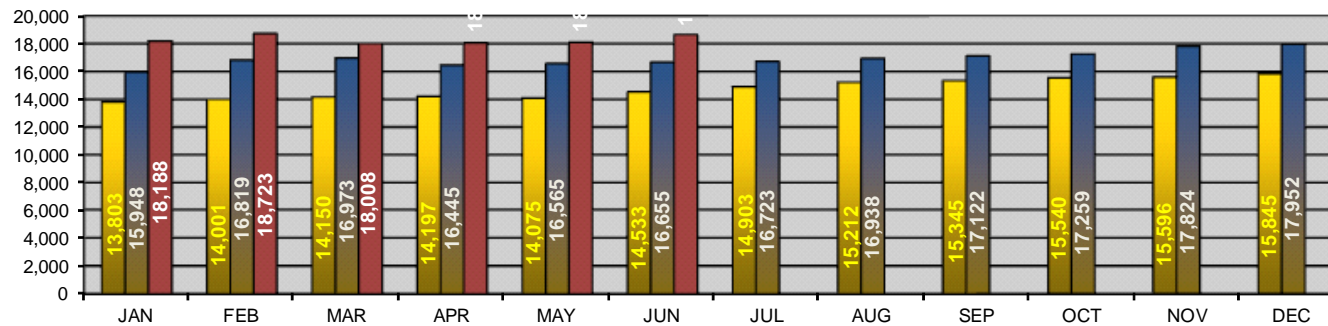


Loan Initiations



Average New Loan Initiations 2011: 475
 2012: 500
 2013: 535

Outstanding Loans



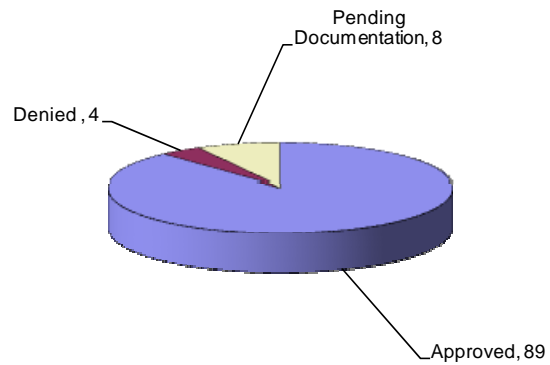
Average Outstanding Loans 2011: 14,767
 2012: 16,935
 2013: 18,286

Historical data found on page 40.

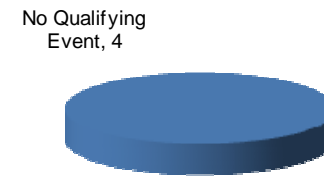
Hardships



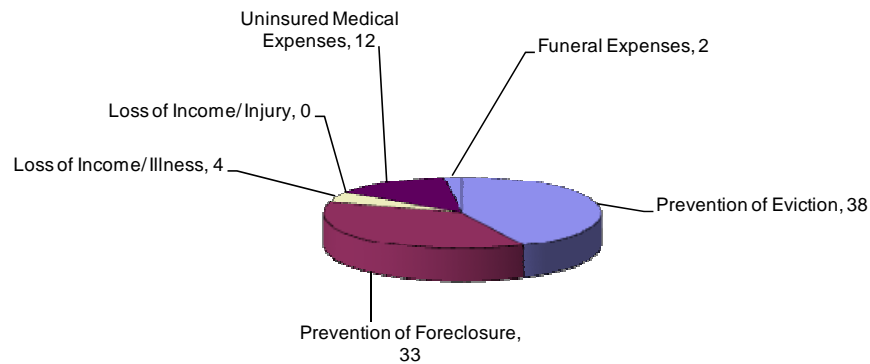
Hardships Processed During Quarter



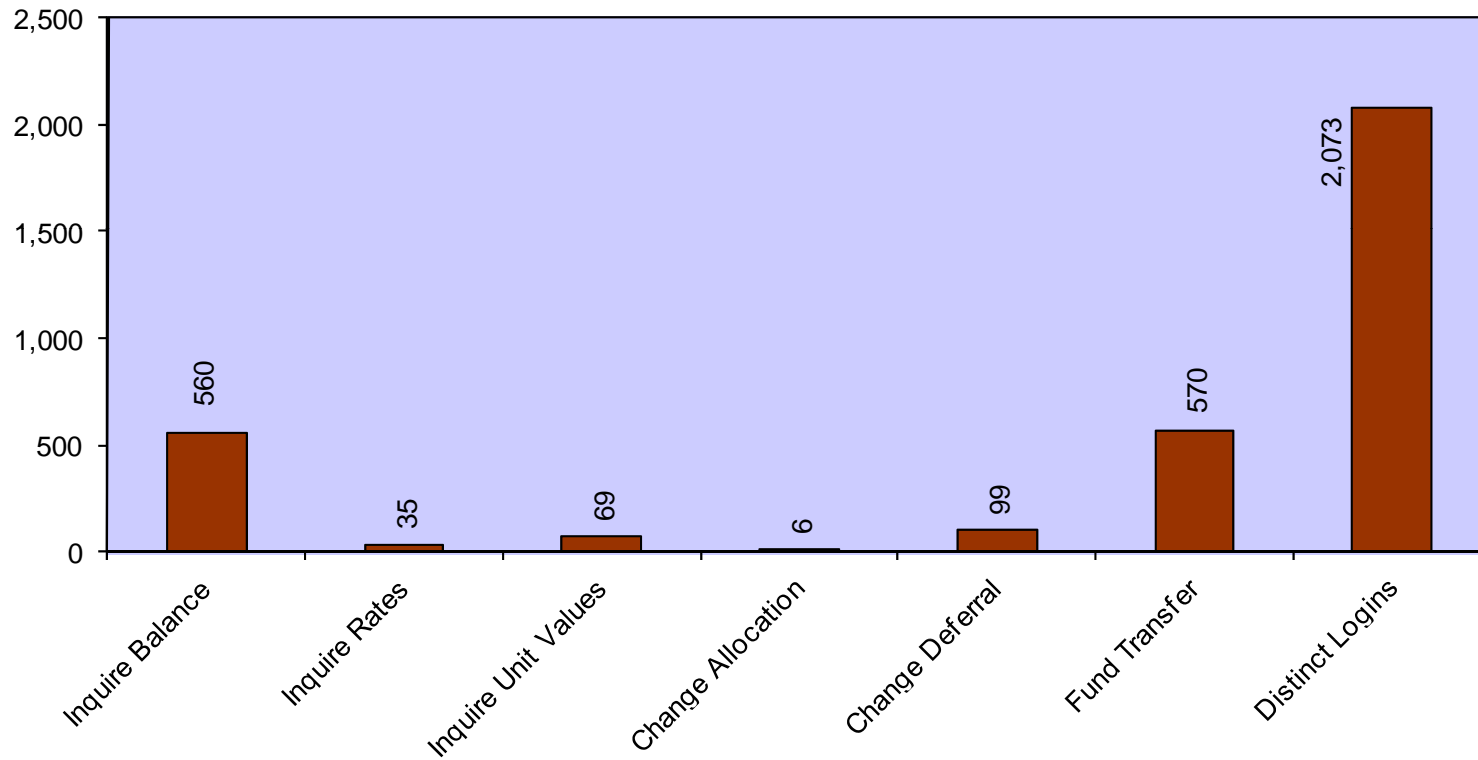
Denial Reasons



Distribution Reasons

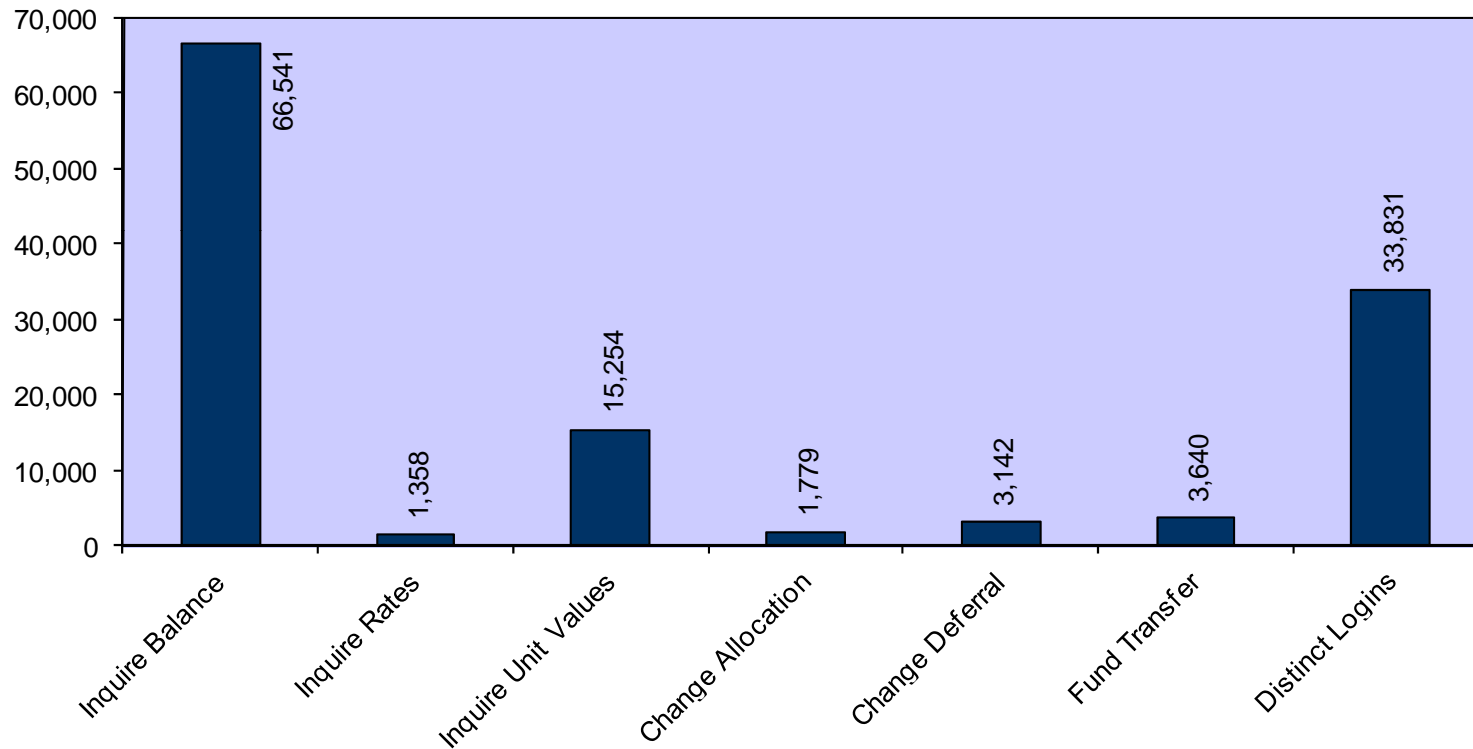


Keytalk® Statistics



Total Logins Keytalk: 11,804

Internet Statistics



Total Logins Internet: 227,626
Average Logins Internet Monthly: 76,542
Average Distinct Users Monthly: 11,277

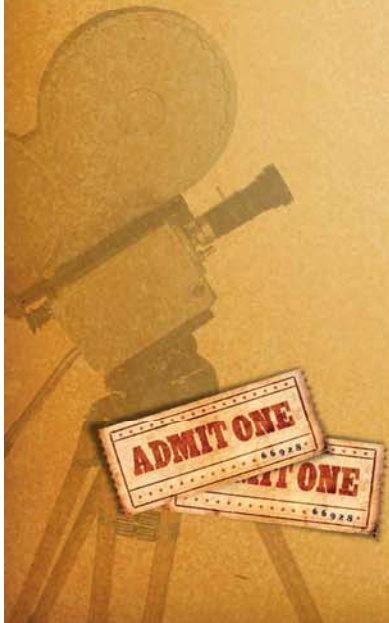
Online Statement Delivery Statistics



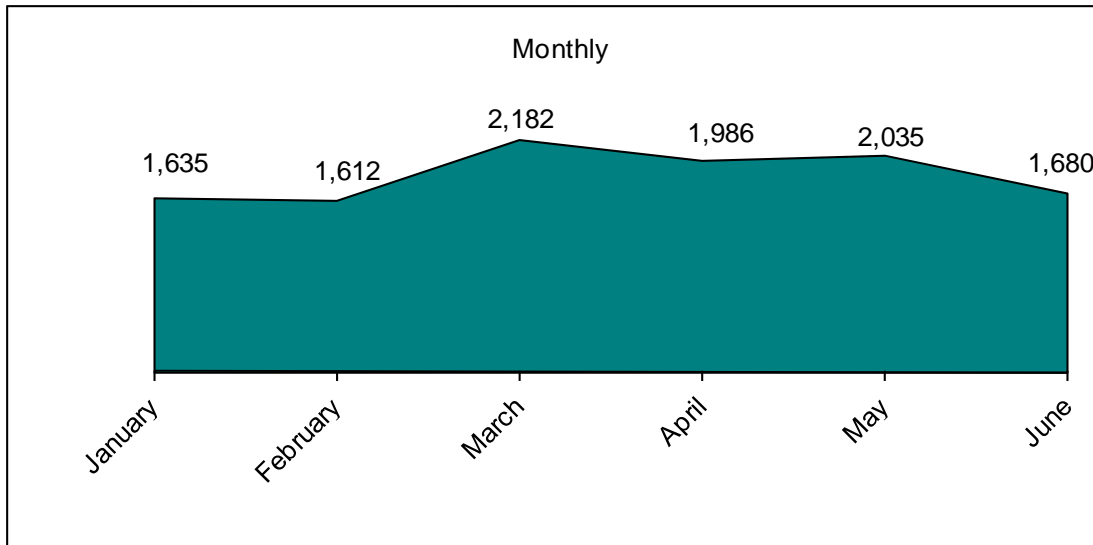
Quarter Ending	Online Statements	Total Statements	Percentage Utilization
12/31/2011	2,369	40,348	5.87%
3/31/2012	2,348	40,566	5.79%
6/30/2012	2,918	40,582	7.19%
9/30/2012	2,956	40,494	7.30%
12/31/2012	3,003	40,392	7.43%
3/31/2013	4,014	40,550	9.90%
6/30/2013	4,088	40,604	10.07%



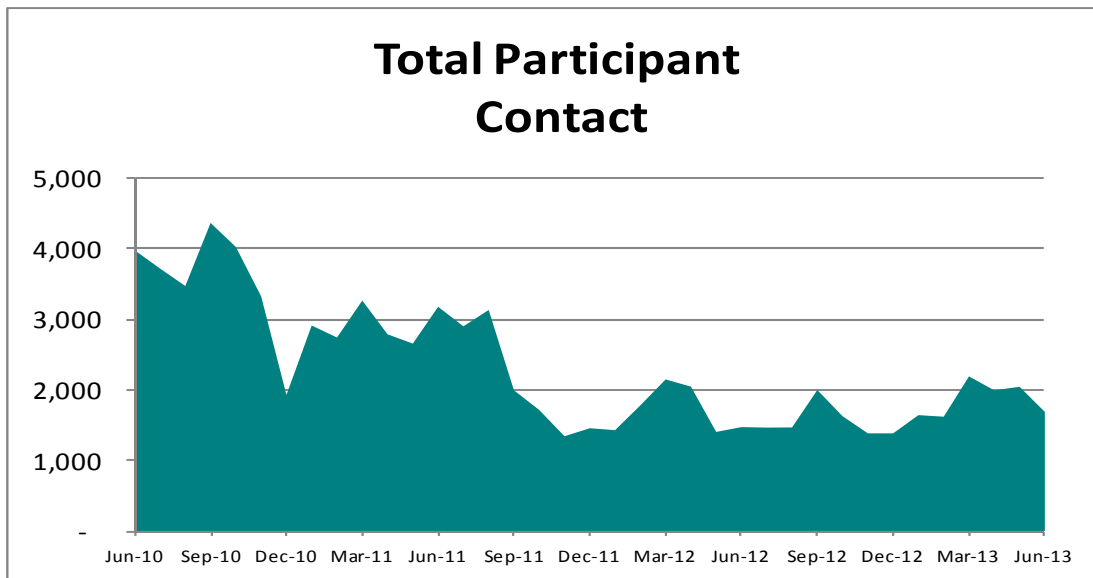
Local Office Activity



Total Participant Contact

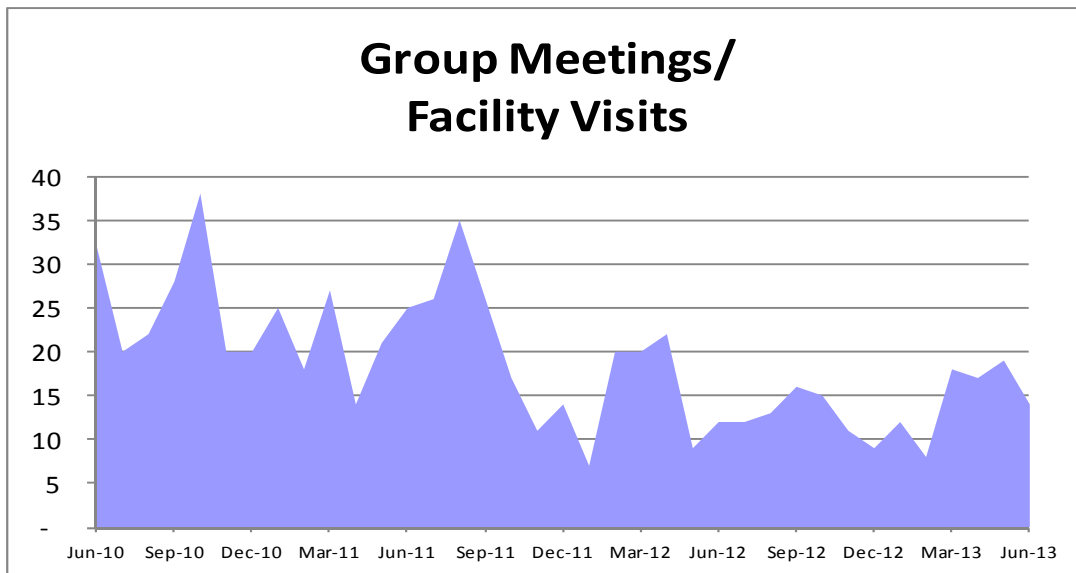
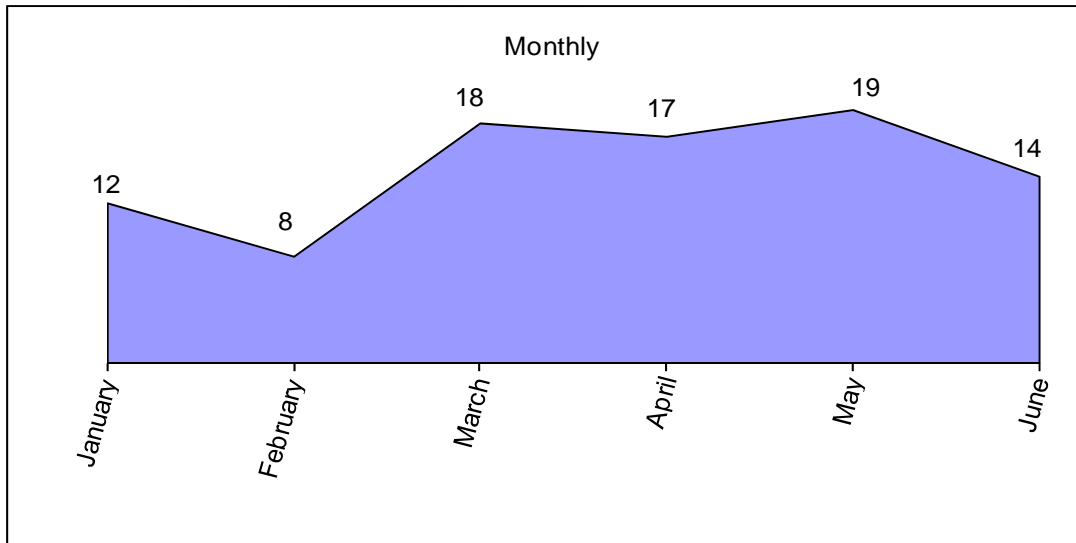


- 2nd Quarter
- Talked or met with over 5,700 participants.
- Popular topics: Accrued Leave, Distribution Requests, DROP Roll-In's, Loans (Active and Retiree).



Participant contact is total number of employees and participants that we have talked with either in person or over the phone through group meetings and individual counseling sessions.

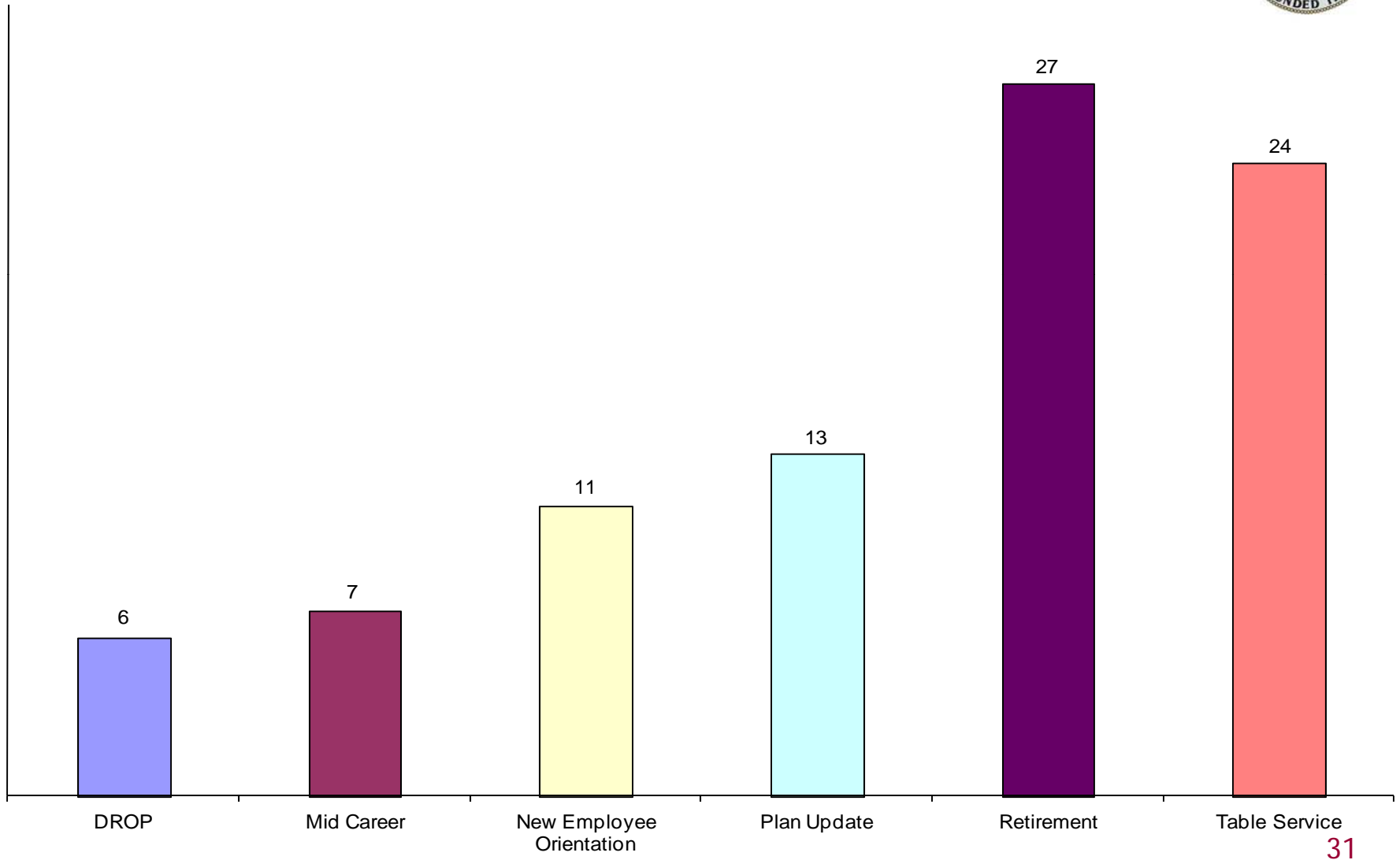
Number of Meetings/Facility Visits



- Topics
 - Table Service at DWP, LAWA (LAX, Van Nuys, and Ontario), Harbor Department, and NEO's at Police and DWP.
 - Visits to Office of Finance, LACERS Retirement Presentations, and DWP Retirement Presentations..

This number includes table service, group meetings and educational seminars.

Type of Meetings-Year-To-Date

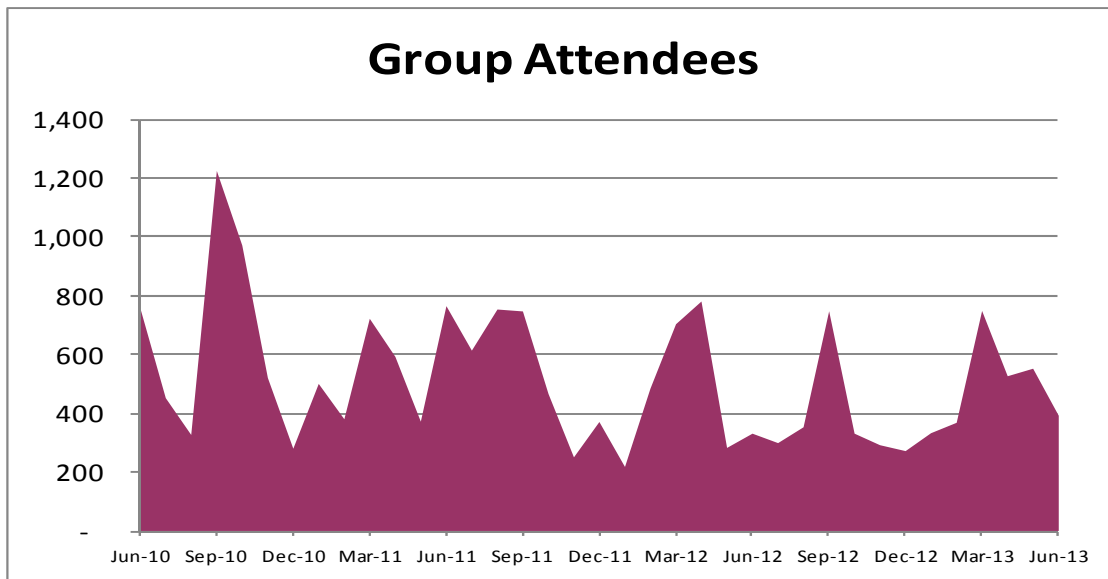
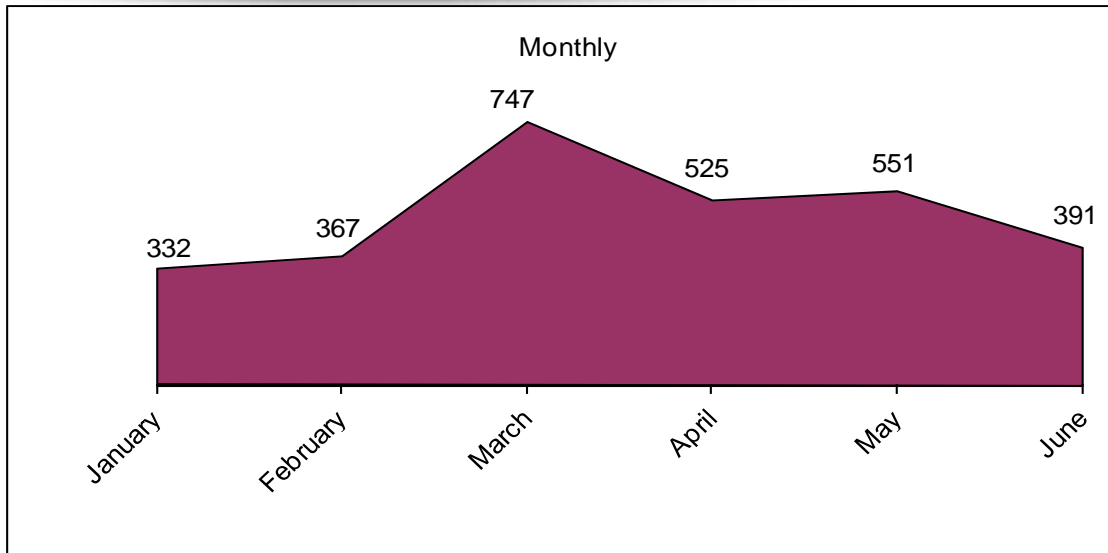


Group Meetings by Department- YTD



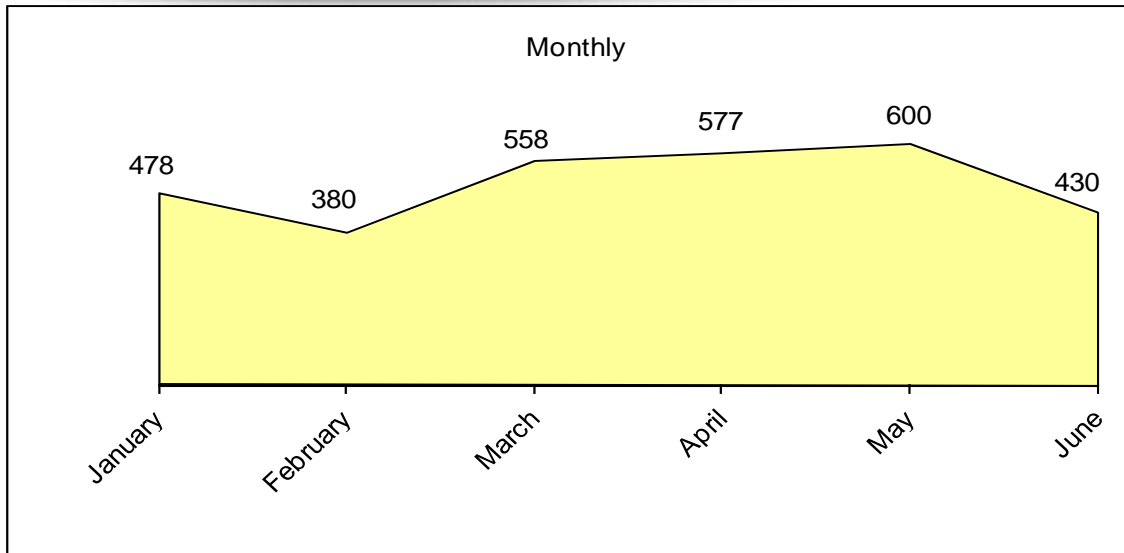
Department	Meetings	Attendees	Individual Sessions	Enrollments
City Council	1	17	5	1
DWP	33	1,299	571	122
Finance	6	98	32	8
Fire	4	39	39	1
FPPEN	3	144	39	0
Harbor	3	68	68	14
LACERS	17	624	177	4
LAPPL	1	215	57	3
LAWA	4	66	66	12
Mayor	1	35	11	3
Personnel	8	62	62	4
Police	5	188	119	63
PW-Sanitation	1	23	23	2
PW-Street Services	1	35	14	5
Grand Total	88	2,913	1,283	242

Number of Attendees at Group Meetings



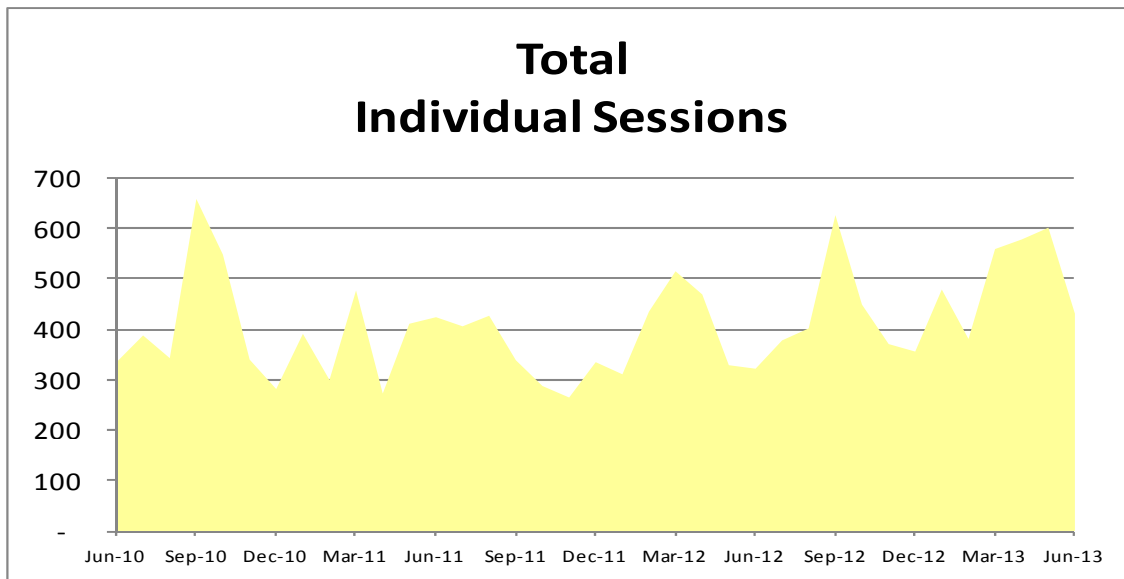
- DWP
 - Continued New Employee Orientations at JFB and Sun Valley
 - Large amount of attendees at Retirement Presentations and Mid-Career Presentations.
- Office of Finance
 - Meetings at City Hall, Garland Building, and Hollywood Office.
- LAWA
 - Big demand at LAX for seeing Counselors

Individual Counseling Sessions



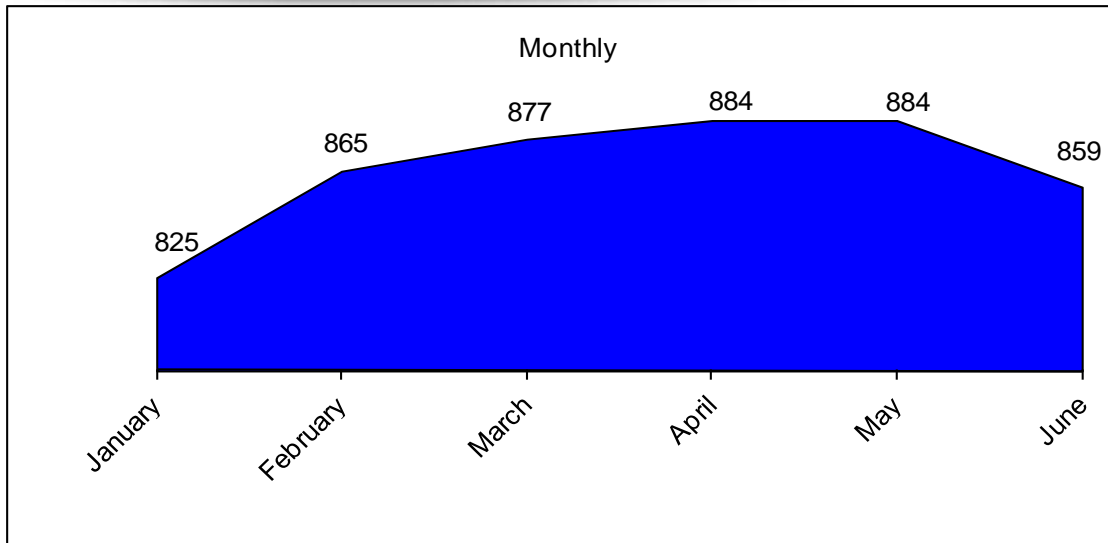
Counseling Session Topics

- Accrued Leave
- Distribution Counseling
- DROP
- Loans (Active and Retiree)
- Contribution changes



Individual counseling sessions include counseling conducted at City Hall, and any other location, such as at table service.

Local Office Phone Calls



Local Office Calls

- Local office averaging just over 480 calls a month

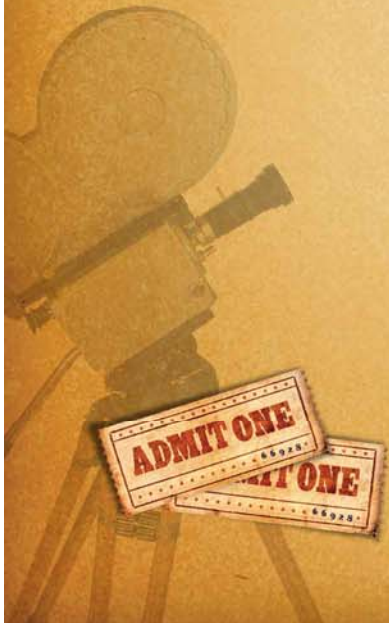
City Hall Service Center

- Steady volume just above 390 calls a month
- Catch-Up Enrollments
- Loan Requests
- Distribution Requests
- Accrued Leave





Appendix



Asset Distribution



Asset Class/Fund Name	at 09/30/12			at 12/31/12			at 03/31/13			at 06/30/13		
	Amount	PCT	Accounts	Amount	PCT	Accounts	Amount	PCT	Accounts	Amount	PCT	Accounts
Profile Portfolios												
Ultra Aggressive Profile Portfolio	\$36,536,769	1.1%	2,918	\$38,748,781	1.1%	2,918	\$44,629,032	1.25%	3,294	\$56,931,776	1.48%	3,489
Aggressive Profile Portfolio	\$137,245,367	4.0%	8,398	\$151,715,332	4.3%	8,398	\$156,399,799	4.37%	8,679	\$181,657,845	4.72%	8,914
Moderate Profile Portfolio	\$158,237,233	4.6%	7,438	\$169,507,145	4.8%	7,438	\$174,157,130	4.87%	7,743	\$205,021,351	5.32%	7,888
Conservative Profile Portfolio	\$57,774,245	1.7%	2,749	\$63,602,667	1.8%	2,749	\$68,440,050	1.91%	2,950	\$82,053,348	2.13%	3,036
Ultra Conservative Profile Portfolio	\$30,328,527	0.9%	1,118	\$32,641,812	0.9%	1,118	\$35,155,868	0.98%	1,191	\$36,955,524	0.96%	1,192
Profile Portfolios	\$420,122,142	12.2%	22,621	\$456,215,737	13.0%	22,621	\$478,781,878	13.4%	23,857	\$562,619,844	14.6%	24,519
International												
DWS EAFE Equity Index Fund	\$29,176,357	0.8%	3,104	\$30,898,281	0.9%	3,104	\$33,176,947	0.9%	3,187	\$35,597,830	0.9%	3,219
Fidelity Diversified International Fund	\$124,565,711	3.6%	8,981	\$132,105,558	3.8%	8,981	\$139,579,904	3.9%	9,023	\$147,087,086	3.8%	8,956
International	\$153,742,068	4.5%	12,085	\$163,003,839	4.6%	12,085	\$172,756,851	4.8%	12,210	\$182,684,916	4.7%	12,175
Small/Mid Cap Blend												
SSGA Russell Small Cap Index NL Series S	\$128,733,048	3.7%	8,975	\$136,215,693	3.9%	8,975	\$138,238,861	3.9%	9,057	\$170,729,805	4.4%	9,177
DCP Mid Cap Fund	\$87,417,024		4,689	\$88,678,741	2.5%	4,689	\$88,678,741	2.5%	5,016	\$119,455,842	3.1%	5,302
Small/Mid Cap Blend	\$216,150,072	6.3%	13,664	\$224,894,434	6.4%	13,664	\$226,917,601	6.3%	14,073	\$290,185,648	7.5%	14,479
Large-Cap												
DCP Large Cap Fund	\$1,137,094,385		21,054	\$1,107,862,635	31.5%	21,054	\$1,107,862,635	31.0%	20,980	\$1,228,769,630	31.9%	20,896
Large-Cap	\$1,137,094,385	33.0%	21,054	\$1,107,862,635	31.5%	21,054	\$1,107,862,635	31.0%	20,980	\$1,228,769,630	31.9%	20,896
Bond												
DCP Bond Fund	\$220,856,219		9,852	\$221,796,738	6.3%	9,852	\$221,796,739	6.2%	9,401	\$184,906,680	4.8%	9,088
Bond	\$220,856,219	6.4%	9,852	\$221,796,738	6.3%	9,852	\$221,796,739	6.2%	9,401	\$184,906,680	4.8%	9,088
Stable Value Fund												
Deferred Compensation Stable Value Fund	\$797,933,196	23.1%	12,966	\$821,127,274	23.4%	12,966	\$843,972,051	23.6%	13,001	\$867,220,597	22.5%	13,063
Stable Value Fund	\$797,933,196	23.1%	12,966	\$821,127,274	23.4%	12,966	\$843,972,051	23.6%	13,001	\$867,220,597	22.5%	13,063
Fixed Bank Fund												
Washington Mutual CD's	\$9,571,143	0.3%	275	\$8,565,942	0.2%	275	\$5,924,884	0.2%	198	\$4,894,952	0.1%	170
FDIC Insured Savings Option	\$297,027,459	8.6%	9,816	\$296,354,124	8.4%	9,816	\$305,937,996	8.5%	9,633	\$299,068,771	7.8%	9,559
Fixed Bank Fund	\$306,598,602	8.9%	10,091	\$304,920,066	8.7%	10,091	\$311,862,880	8.7%	9,831	\$303,963,723	7.9%	9,729
Self-Directed												
Schwab Self-Directed	\$194,722,307	5.6%	3,942	\$212,608,893	6.1%	3,942	\$214,734,272	6.0%	4,063	\$230,206,151	6.0%	4,178
Self-Directed	\$194,722,307	5.6%	3,942	\$212,608,893	6.1%	3,942	\$214,734,272	6.0%	4,063	\$230,206,151	6.0%	4,178
Grand Total	\$3,447,218,990	100.0%	106,275	\$3,512,429,615	100.0%	106,275	\$3,578,684,906	100.0%	107,416	\$3,850,557,188	100.0%	108,127

Net Transfer Detail



<i>Fund Name</i>	<i>Contributions</i>	<i>Additional Deposit</i>	<i>Transfers In</i>	<i>Distributions</i>	<i>Transfers Out</i>	<i>Ending Balance</i>	<i>Net Transfers</i>
Ultra Aggressive Profile Portfolio	\$2,825,315	\$159,574	\$13,248,033	(\$1,186,338)	(\$11,128,712)	\$3,917,872	\$2,119,321
Aggressive Profile Portfolio	\$7,142,988	\$134,837	\$17,628,373	(\$3,359,936)	(\$15,953,046)	\$5,593,216	\$1,675,326
Moderate Profile Portfolio	\$4,980,975	\$182,708	\$16,666,631	(\$2,762,498)	(\$10,137,118)	\$8,930,698	\$6,529,513
Conservative Profile Portfolio	\$1,839,541	\$209,586	\$12,182,305	(\$1,724,507)	(\$9,929,745)	\$2,577,181	\$2,252,560
Ultra Conservative Profile Portfolio	\$727,577	\$208,678	\$6,063,060	(\$708,756)	(\$6,990,452)	(\$699,892)	(\$927,391)
Fidelity Diversified International	\$3,507,038	\$85,380	\$3,571,601	(\$1,652,355)	(\$6,315,400)	(\$803,738)	(\$2,743,800)
DWS EAFE Equity Index	\$986,066	\$8,188	\$2,144,088	(\$391,531)	(\$1,918,605)	\$828,207	\$225,483
SSGA Russell Small Cap Index NL Series S	\$3,505,469	\$46,234	\$23,571,680	(\$1,905,377)	(\$20,874,792)	\$4,343,214	\$2,696,888
DCP Mid Cap Fund	\$2,961,224	\$18,661	\$13,969,615	(\$1,143,939)	(\$8,170,351)	\$7,635,208	\$5,799,264
DCP Large Cap Fund	\$19,542,908	\$246,641	\$14,474,323	(\$17,376,217)	(\$30,167,212)	(\$13,279,557)	(\$15,692,889)
DCP Bond	\$3,670,898	\$528,617	\$5,638,625	(\$3,972,781)	(\$21,975,484)	(\$16,110,126)	(\$16,336,860)
FDIC - Insured Savings Account	\$5,316,823	\$774,659	\$36,369,473	(\$6,198,217)	(\$34,326,859)	\$1,935,879	\$2,042,614
Deferred Compensation Stable Value	\$9,670,851	\$9,415,728	\$49,386,871	(\$21,928,181)	(\$37,810,278)	\$8,734,991	\$11,576,593
JPMorganChase Certificates of Deposit	\$0	\$0	\$0	(\$24,986)	(\$1,061,053)	(\$1,086,039)	(\$1,061,053)
Schwab Self-Directed	\$2,309,239	\$0	\$9,202,459	\$0	(\$7,307,629)	\$4,204,070	\$1,894,831

Net Cash Flow Detail



Fund	Contributions	Additional Deposit	Transfers In	Distributions	Transfers Out	Net Cash Flow
Ultra Aggressive Profile Portfolio	\$2,825,315	\$159,574	\$13,248,033	(\$1,186,338)	(\$11,128,712)	\$3,917,872
Aggressive Profile Portfolio	\$7,142,988	\$134,837	\$17,628,373	(\$3,359,936)	(\$15,953,046)	\$5,593,216
Moderate Profile Portfolio	\$4,980,975	\$182,708	\$16,666,631	(\$2,762,498)	(\$10,137,118)	\$8,930,698
Conservative Profile Portfolio	\$1,839,541	\$209,586	\$12,182,305	(\$1,724,507)	(\$9,929,745)	\$2,577,181
Ultra Conservative Profile Portfolio	\$727,577	\$208,678	\$6,063,060	(\$708,756)	(\$6,990,452)	(\$699,892)
Fidelity Diversified International	\$3,507,039	\$85,380	\$3,571,601	(\$1,652,355)	(\$6,315,400)	(\$803,737)
DWS EAFE Equity Index	\$986,066	\$8,188	\$2,144,088	(\$391,531)	(\$1,918,605)	\$828,207
SSGA Russell Small Cap Index NL Series S	\$3,505,469	\$46,234	\$23,571,680	(\$1,905,377)	(\$20,874,792)	\$4,343,214
DCP Mid Cap Fund	\$2,961,224	\$18,661	\$13,969,615	(\$1,143,939)	(\$8,170,351)	\$7,635,208
DCP Large Cap Fund	\$19,542,908	\$246,641	\$14,474,323	(\$17,376,217)	(\$30,167,212)	(\$13,279,557)
DCP Bond Fund	\$3,670,898	\$528,617	\$5,638,625	(\$3,972,781)	(\$21,975,484)	(\$16,110,126)
FDIC - Insured Savings Account	\$5,316,823	\$774,659	\$36,369,473	(\$6,198,217)	(\$34,326,859)	\$1,935,879
Deferred Compensation Stable Value	\$9,670,851	\$9,415,728	\$49,386,871	(\$21,928,181)	(\$37,810,278)	\$8,734,991
JPMorganChase Certificates of Deposit	\$0	\$0	\$0	(\$24,986)	(\$1,061,053)	(\$1,086,039)
Schwab Self-Directed	\$2,309,239	\$0	\$9,202,459	\$0	(\$7,307,629)	\$4,204,070

Loan Details



LOANS INITIATED

Year	JAN	FEB	MAR	APR	MAY	JUN	JUL	AUG	SEP	OCT	NOV	DEC	TOTAL YTD
2009	312	294	311	336	369	449	427	487	474	476	460	412	4,807
2010	380	376	496	450	490	514	459	548	488	428	468	451	5,548
2011	387	415	501	438	510	508	484	557	459	465	484	487	5,695
2012	395	386	495	501	496	488	549	575	520	516	572	501	5,994
2013	524	443	476	612	593	560							3,208

PARTICIPANTS WITH ONE OUTSTANDING LOAN

Year	JAN	FEB	MAR	APR	MAY	JUN	JUL	AUG	SEP	OCT	NOV	DEC
2009	7,388	7,480	7,622	7,719	7,810	7,945	8,035	8,157	8,317	8,495	8,640	8,766
2010	8,801	8,901	9,011	9,097	9,253	9,383	9,480	9,626	9,730	9,852	10,007	10,131
2011	9,783	9,885	9,957	9,871	9,697	10,027	10,197	10,298	10,372	10,291	10,236	10,407
2012	10,832	11,839	11,709	11,169	11,171	11,283	11,246	11,351	11,454	11,558	11,732	11,825
2013	11,952	11,732	11,757	12,020	11,727	12,241						

PARTICIPANTS WITH MORE THAN ONE OUTSTANDING LOAN

Year	JAN	FEB	MAR	APR	MAY	JUN	JUL	AUG	SEP	OCT	NOV	DEC
2009	1,674	1,776	1,867	2,018	2,086	2,211	2,335	2,458	2,562	2,693	2,839	2,953
2010	2,923	3,000	3,109	3,201	3,287	3,403	3,516	3,675	3,792	3,890	3,997	4,106
2011	4,020	4,116	4,193	4,326	4,378	4,506	4,706	4,914	4,973	5,249	5,360	5,438
2012	5,116	4,980	5,264	5,276	5,394	5,372	5,477	5,587	5,668	5,701	6,092	6,127
2013	6,236	6,991	6,251	6,043	6,358	6,407						

TOTAL OUTSTANDING LOANS

Year	JAN	FEB	MAR	APR	MAY	JUN	JUL	AUG	SEP	OCT	NOV	DEC
2009	9,062	9,256	9,489	9,737	9,896	10,156	10,370	10,615	10,879	11,188	11,479	11,719
2010	11,724	11,901	12,120	12,298	12,540	12,786	12,996	13,301	13,522	13,742	14,004	14,237
2011	13,803	14,001	14,150	14,197	14,075	14,533	14,903	15,212	15,345	15,540	15,596	15,845
2012	15,948	16,819	16,973	16,445	16,565	16,655	16,723	16,938	17,122	17,259	17,824	17,952
2013	18,188	18,723	18,008	18,063	18,085	18,648						

LOANS IN DEFAULTED STATUS

Year	JAN	FEB	MAR	APR	MAY	JUN	JUL	AUG	SEP	OCT	NOV	DEC
2009	303	292	321	318	311	367	362	354	381	377	371	450
2010	428	419	497	476	468	527	544	537	637	619	608	597
2011	596	586	639	620	615	639	630	618	664	664	744	731
2012	690	751	732	719	709	752	736	718	806	806	783	813
2013	842	773	765	798	771	842						



The End

Director
Lisa Tilley

Cast
Gary Robison

Producer
Monise Lane